

Republic of Yemen
Ministry of Public Works and Highways
Rural Access Program – Central Management Office

UNITED NATIONS OFFICE FOR PROJECT SERVICES

YEMEN EMERGENCY LIFELINE CONNECTIVITY PROJECT
Component 1: Rural and Village Access Roads Improvement and Maintenance
Sub-Component 1.A: Rehabilitation of Lifeline Rural Access Roads

Rehabilitation of Rural Road in Al Hodeidah Governorate
Bajil–Al Gonaydeah–Assalif
Environmental and Social Management Plan

19 September 2022

Table of Contents

Abbreviations	4
Summary Sheet	5
Introduction	6
Subproject description	6
Location and coordinates	8
Scope of work	8
Legal and institutional framework of the project	10
World Bank requirements relevant to the project	10
Environment, Health and Safety Guidelines	11
Environmental and social baseline conditions	12
Climate and weather	12
Geology and soil characteristics	13
Water resources and hydrology	13
Air quality and noise	14
Biological resources	14
Cultural and historical sites	14
Socioeconomic aspects	14
Resources and services' access restriction	15
Environmental and social impacts assessment	15
Applicability	15
Eligibility (Exclusion List)	15
Environmental and social screening form	16
Risk level and mitigation instruments	18
Labor management	18
Occupational health and safety impacts	19
Environmental and social impacts	20
Environmental and social management plan	23
Environmental and Social Monitoring Plan	37
Public Consultation	45
Consultation topics	45
Public consultation findings and feedback	45
Stakeholders engagement and information disclosure	46
Subproject sustainability	46

Rehabilitation of Bajil–Al Gonaydeah–Assalif Rural Road ESMP

Consultation during implementation	46
Grievance mechanism	47
Complaints registration	47
Tracking, investigating and resolving complaints	47
Grievance categories	48
Steps to handle GM	48
Reporting of ESMP	48
Annex 1 Environmental and social requirements for contractors	50
Annex 2 GM Complaint and Suggestion Form	64
Annex 3: Samples of Public Consultation Questionnaires	65
Annex 4 Consultation Records Samples	66
Annex 5 Subproject Photos	67
Annex 6 Due diligence report	69
Annex 7 Relocation activities summary	69

Abbreviations

BoQs	Bill of Quantities
C-ESMP	Contractor Environmental and Social Management Plan
CITES	Convention on International Trade in Endangered Species
cm	centimeter
cu. m.	Cubic Meter m ³
EHS	Environmental, Health and Safety
E&S	Environmental and Social
ESF	Environmental and Social Framework of the World Bank
ESHS	Environment, Social (including labor), Health, and Safety
ESIA	Environmental and Social Impacts Assessment
ESMF	Environmental and Social Management Framework
ESMP	Environmental and Social Management Plan
ESS	Environmental and Social Standard
ESSO	Environmental and Social Safeguards Officer
GBV	Gender Based Violence
GHS	General Health and Safety Guidelines
GIIP	Good International Industry Practice
GM	Grievance Mechanism
HSSE	Health, Safety, Social and Environment
IDA	International Development Association
IDP	Internally Displaced Person
km	Kilometer
L.M.	Linear Meter
LMP	Labor Management Procedures
mm	millimeter
OHS	Occupational, Health and Safety
PAP	Project Affected People
PPE	Personal Protective Equipment
PCBs	Polychlorinated biphenyls
RF	Resettlement Framework
RAP	Rural Access Program
SEA	Sexual Exploitation and Abuse
SH	Sexual Harassment
SEP	Stakeholder Engagement Plan
SMP	Security Management Plan
sq. m.	square meter m ²
TPM	Third Party Monitoring
UNOPS	United Nations Office for Project Services
YELCP	Yemen Emergency Lifeline Connectivity Project

Summary Sheet

Table 1 Subproject summary sheet

Subproject Name	Bajil–Al Gonaydeah–Assalif Rural Road Rehabilitation
ID Number	ELC-HOD-001
Estimated Cost	
Subproject Location	Bajil district – Al Hodeidah governorate
Implementing Partner	RAP
Subproject Proposed Risk	Moderate
Date of the field visits	May 2018, December 2021, May 2022
Consultation date	Last consultation session conducted on 20May 2022
Observations/Comments	Indicated below
Signature of ESSO	
Date	

1. Introduction

The current Environmental and social management plan (ESMP) for the rehabilitation of Bajil–Al Gonaydeah–Assalif rural road is prepared based on the Yemen Emergency Lifeline Connectivity Project (YELCP) Environmental and Social Management Framework (ESMF). The ESMF was prepared by the United Nations Office for Project Services (UNOPS) to meet the requirements of the World Bank’s Environmental and Social Framework (ESF), UNOPS requirements and the national regulations. The relevant Environmental and Social Standards (ESS) applicable on the YELCP and this subproject are defined in section 3.1 of this ESMP.

The YELCP ESMF will guide UNOPS and Rural Access Program , to ensure that all subprojects are prepared and implemented in accordance with the ESF requirements, including the preparation of subproject specific ESMP. For this purpose, the ESMF details how UNOPS and RAP will screen each activity to assess its environmental and social aspects and Occupational Health and Safety (OHS) risks and impacts, identify the mitigation measures, and monitor ESMP implementation, most particularly the environmental and social and OHS performance of subprojects contractors. UNOPS has in parallel for the YELCP a Labor Management Procedures (LMP) t, and a GBV/SEA/SH Plan and a Security Management Plan (SMP), and a Resettlement Framework (RF), and a Stakeholder Engagement Plan SEP.

Accordingly, this subproject will follow the requirements of the LMP for labor working conditions and OHS, the GBV action plan for any GBV issues, the SMP to manage any potential security risks, and SEP for stakeholders engagement, grievance mechanism and information disclosure.

This ESMP was prepared after completing the following activities related to the subproject:

- Topographical survey, including establishment and fixing of horizontal and vertical control points, and preparation of contour maps for the subproject corridor required for the design.
- Geotechnical investigation, including assessment of soil samples, laboratory testing, soil description, identification of suitable material for construction.
- Traffic study, comprising study of existing and projected traffic volumes for the road subproject design life.
- Hydrology, including study of available data, estimation of peak hour volume discharge, and identification analysis of drainage structures location, type and size.
- Geometrical design of the road, including Horizontal alignment, longitudinal profiles and cross section.
- Pavement structural section.
- Structural design for drainage and protection works.
- Cost estimation, based on Bill of Quantities and present items rate.
- Socio Economic and Feasibility study

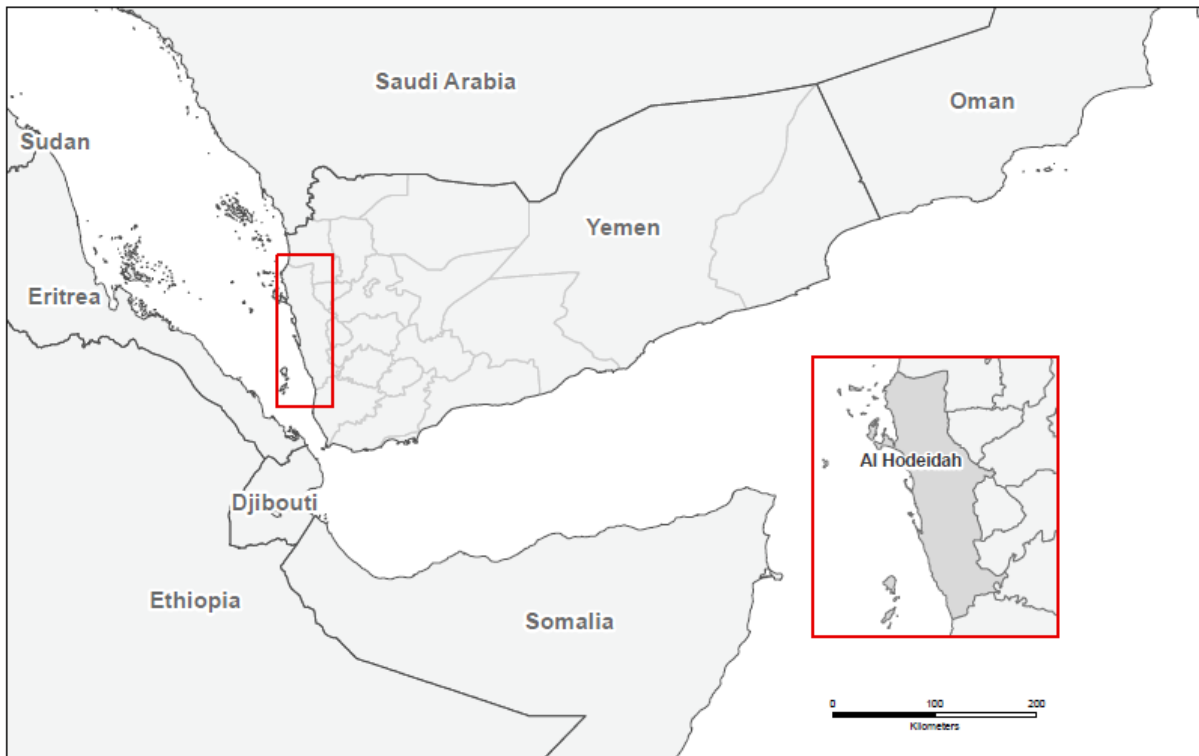
2. Subproject description

Bajil–Al Gonaydeah–Assalif rural road subproject is located in Al Hodeidah Governorate, Bajil District. Al Hodeidah Governorate, which is the fourth largest governorate in Yemen and the principal port on the Red Sea. Al Hodeidahh city is located approximately 226 KM from Sana’a and is situated in the western part of the Republic of Yemen.

Bajil–Al Gonaydeah–Assalif rural road begins 52 KM east of Al Hodeidah city in the flat lowlands terrain, west of Bajil town with its intersection with Sana’a–Al Hodeidah main asphalt road, and

finishes at Assalif in Haradh–Al Hodeidah main asphalt road.

The road is currently ruined and unpaved with a total length of 33 KM and once rehabilitated it is anticipated to serve directly or indirectly 298,840 inhabitants of which 152,240 male and 146,600 are female.



Geographic Location of Al Hodeidah within Yemen

In general, the existing alignment is a fill material in the flat terrain and land cover types along the road corridor vary between cultivated soil and bare soil or desert sand.

This subproject will provide appropriate roads and access for targeted communities, which will facilitate their transportation and will contribute to enhancing the economy in the targeted areas. The subproject was selected based on the needs and priorities in which the targeted road is the main road for beneficiaries, which is a priority for them.

The subproject implementation period is expected to be 18 months in which UNOPS will carry out tender bidding, bids analyses, signing the contract and the overall supervision in cooperation with its implementing partner RAP. A Community committee will be established from the beneficiaries at the subproject area which will play a role in facilitating the implementation and monitor the progress as well as project requirements in close coordination with UNOPS and RAP, additional details on the committee are available hereinafter within the relevant sections. UNOPS and RAP will provide the required training and capacity building for the contractor and committees in terms of environmental and social safeguard management before the implementation. The interventions will provide opportunities for small contractors, skilled and unskilled labor from local communities, which will reduce the negative impacts of the Covid-19 pandemic and will generate positive impacts on the economy, education, and health in the targeted areas. The workers will be properly selected, trained, equipped with necessary PPEs. Activities implementation will be closely followed up, environmental and social safeguards requirements management will be part of the subproject main agenda that will result in enhancing the capacity of contractors and their workers.

2.1. Location and coordinates

The subproject will be implemented in Bajil and Assalif districts in Al Hodeidah governorate, coordinates of rehabilitation start and end point with other details available in the following table

Table 2 Subproject coordinates

Road Name	Start Point		End Point		Length KM	Width Meter
	Latitude	Longitude	Latitude	Longitude		
Bajil–Al Gonaydeah–Assalif rural road	15.051307	43.277218	14.999602	42.985333	33	6



Google map for the road alignment track

2.2. Scope of work

The proposed rehabilitation will take place entirely on the existing road alignment, public land where there is no cultivation nor fruit trees. The activities under the subproject will include generally earth excavation, fill of borrow materials, subgrade preparation, granular base coarse, bitumen prime coat, asphalt concrete wearing, structural excavation for culverts, Irish crossing and retaining walls, reinforced concrete pipe culverts , Irrigation plastic pipes, concrete mixture, high tensile steel, cyclopean concrete, grouted riprap and stone masonry for retaining walls and culverts and are described entirely with safety and environmental works in the scope of works and Bill of Quantities (BoQs). The civil work materials will be sourced from quarries located outside of ecologically sensitive zones, archeological zones, conflict zones, and high OHS risk zones, with no child labor employment allowed. Summary of activities under the subproject included hereafter.

2.2.1 Engineer's Facilities¹

- Provide a rented site office, housing and accommodation for the Engineer staff (18 months).
- Provide (3) vehicles for the Engineer staff including operation cost (18 months).
- Provide a rented laboratory equipment for the Engineer staff including Operation cost (18 months).
- Provide a rented Survey Equipment for the Engineer staff including Operation cost (18 months).

2.2.2 Excavation Works²

- Roadway common excavation (5,305 Cu. m.)
- Roadway rock excavation (5,744 Cu. m.)
- Fill of suitable material from common excavation and/or rock excavation within all haulage distance. (10,600 cu. m.).

2.2.3 Earthworks

- Fill of suitable material (11,049 Cu.m)
- Fill of borrow excavation (253,576 Cu.m)
- Subgrade layer in cut of unsuitable materials (10,015 Cu.m)
- Construct subgrade layer selected material according to the specification requirements (53,280 Cu.m).
- Shoulder preparation using screened materials (66,600 Cu.m)
- Backfill the pits where the dirt and stone used in the road rehabilitation were taken and return them to the original condition.

2.2.4 Pavement and Shoulders

- Granular Base Course Layer - 150 mm thick (44,400 Cu. m.)
- Provide and spray Bituminous Prime Coat, as per Specification (216,195 Sq. m.)
- Provide and lay Asphalt Concrete Wearing Course 40mm thick (8,117 Cu. m.)

2.2.5 Structural Works

- Structural Excavation (Culverts, Retaining Walls, Irish Crossings (3,427Cu. m.)
- Concrete Class 110/25 (Blinding for Culverts, Irish Crossings& retaining walls etc...) (55 Cu. m.)
- Concrete Class 210/20 (Culvert Top Slab, Irish Crossings Cut off Wall & Slab etc...) (154 Cu. m.)
- Cyclopean Concrete Class 210/20 (Culvert / Retaining Walls Beds, barriers, Paving, etc...) (482 Cu. m.)
- High Tensile steel bar reinforcement (Grade - 60) (10.3Ton)
- Grouted Riprap 25cm thick (Irish Crossing, road side ditches, slope protection and culvert inlet & outlet) (18,267 Sq.m.).
- Gabions (For Irish Crossing, Slope Protection) (396 Cu. m.)
- Stone Masonry Dressed Coursed with Mortar (for Retaining Walls, Culverts, and Safety Barriers) (1,794 Cu. m.).
- Boulder Masonry for Retaining Walls, Culverts, Safety Barriers (629 Cu. m.)

2.2.6 Safety Works

- Project Name Board with their support, fittings and concrete foundation) (2 No).
- Small Signs (not exceeding 1 Sq.m. area) with their signal posts (106 No).
- Thermoplastic, reflectorized paint (TRP) for Pavement Marking of 10 cm (87,310 L.m).
- Relocation of Existing Walls³ (135 L.m).

¹ The contractor will be responsible for the rest of the workers' lodging, which must meet UNOPS OHS criteria and minimum requirements that include appropriate accommodation with limited number of personnel and to be provided with the proper sanitation premises

² Excavation works in the road vary from section to section based on the road condition and the necessary alignment, maximum excavation depth is 80 cm.

³ All assets (walls, fences, poles and pipes) that require relocation are public and will be relocated into public lands. Relocation activities are defined and clarified in annex 7

- Relocation of Existing fences (100 L.m).
- Relocation of Existing Water pipe (100 No).
- Relocation of Existing Electric Poles (8 No).
- Relocation of Existing Telephone Poles (3 No).
- Reconstruction of the existing Manholes (Raise or lower) (11 No)
- Provide and install AC speed hump as shown on drawings. Items include Paint (white & yellow). The paint shall be of reflective thermoplastic striping material and as directed by the engineer (48 L.m.)
- Provided and install road Cats Eyes (two face) (432 No)
- Provide and install Galvanized Steel Fences (Guard Rails). (360 L.m.)
- Provide and install Galvanized Steel Fence s (Handrails) (324 L.m.)
- Provide and install High Delineator, to be put on each side of Irish Crossing at every 12 m as detailed in drawings sheet (S_DT_006) and appendix specification. (10 No)

2.2.7 Environmental Works

- Reinforced Concrete Pipe Culvert 120 cm dia. including plain concrete for cradle & sand for fill. (90 L.m).
- Reinforced Concrete Pipe Culvert 100 cm dia. including plain concrete for cradle & sand for fill. (28 L.m).
- Reinforced Concrete Pipe Culvert 90 cm dia. including plain concrete for cradle & sand for fill. (56 L.m).
- Irrigation Pipes⁴ MS 300 mm diameter including excavation and filling (76 L.m).
- Irrigation Pipes MS 10 mm diameter including excavation and filling (528 L.m) 3.

3. Legal and institutional framework of the project

This ESMP is prepared to meet the requirements of the World Bank’s ESF, including as well as the World Bank Group Environment, Health and Safety (EHS) Guidelines, and [the EHS sector specific guidelines for toll roads as relevant](#), and other guidelines and guidance and to comply with national environmental and social laws and regulations.

3.1 World Bank requirements relevant to the project

Relevant ESSs on the YELCP and this subproject are described below:

- ESS1 Assessment and Management of Environmental and Social Risks and Impacts; standard requirements include:
 - Provision of adequate organizational structure including environmental and social staff
 - The environmental and social assessment and management plans that need to be developed at the project and subproject level in which the ESMPs shall be prepared for any subproject, cleared prior implementing any civil work activities
 - List of excluded activities from any project support
 - Third Party Monitoring (TPM) role in the project implementation and reporting requirements
- ESS 2 Labor and Working Conditions; standard requirements include:
 - LMP preparation requirements and identifying the labor risks associated with the project implementation
 - Code of Conduct (CoC) preparation and application on the workers involved in the

⁴ These irrigation pipes are to convey irrigated water from one side of the road to the other and are located based on consultation with the water users in the area. The role of such is to safely intake the water into the road drainage system and take it out in a safe manner.

- project
 - Grievance Mechanism for project workers shall be established and maintained
 - OHS measures to be adopted prior to the commencement of any project activities
- ESS 3 Resource Efficiency and Pollution Prevention and Management; standard requirements include:
 - Identification of measures to manage hazardous and non-hazardous wastes including waste disposal sites, to use scarce resources (water, construction material, etc.), to manage air emissions due to use of fossil fuel for energy generation and to ensure energy efficiency in accordance with the World Bank’s Environmental, Health and Safety Guidelines (EHSs), other relevant Good International Industry Practice (GIIP) and relevant UNOPS guidelines
- ESS 4 Community Health and Safety; standard requirements include:
 - Assess and manage specific risks and impacts to the community arising from Project/Subproject activities and include these mitigation measures in the ESMPs
 - Preparation and implementation of GBV action plan to assess and manage GBV risks related to the Project and prevent and respond to sexual exploitation and abuse, and sexual harassment.
 - Preparation and implementation of SMP to assess and manage security risks
- ESS 5 Land Acquisition, Restrictions on Land Use and Involuntary Resettlement; A due diligence was conducted to assess whether any of the subproject road sections led to ESS 5 impacts and it concluded that there was no impact. Due diligence report is available in annex 6 of this ESMP
- ESS 6 Biodiversity Conservation and Sustainable Management of Living Natural Resources; the subproject interventions will be limited to the existing road footprint and will not involve new construction. Therefore, it is not expected that this subproject activities will impact biodiversity and habitats
- ESS 8 Cultural Heritage; the subproject will be entirely implemented within the existing right of way where there are no cultural or historical sites
- Ess10. Stakeholder Engagement and Information Disclosure; standard requirements include:
 - Preparation and implementation of SEP and to be applied to all activities under the project
 - Grievance mec

3.2 Environment, Health and Safety Guidelines

The ESF requires all projects to apply the relevant requirements of the World Bank Group Environmental, Health and Safety Guidelines (EHSs). These are technical reference documents, with general and industry specific examples of Good International Industry Practice (GIIP). Such guidelines define acceptable pollution prevention and abatement measures and emission levels in World Bank financed projects.

The EHS Guidelines contain the performance levels and measures that are generally considered to be achievable in new facilities by existing technology at reasonable costs. Application of the EHS Guidelines to existing facilities may involve the establishment of site-specific targets, with an appropriate timetable for achieving them.

The environmental assessment process may recommend alternative (higher or lower) levels or measures, which, if acceptable to the World Bank, become project - or site-specific requirements.

If less stringent levels or measures than those provided in the EHS Guidelines are appropriate, in view of specific project circumstances, a full and detailed justification for any proposed alternatives is needed as part of the site-specific environmental assessment. This justification should demonstrate that the choice for any alternate performance levels is protective of human health and the

environment. When host country regulations differ from the levels and measures presented in the EHS Guidelines, projects are expected to achieve whichever is more stringent.

In the context of rural road subprojects, UNOPS and RAP will use the General EHS Guidelines that cover environmental, occupational health and safety, and community health and safety related risks.

4. Environmental and social baseline conditions

The subproject is located within Al Hodiedah Governorate in the western part of the country in about 225 KM distance from the capital Sana’a. Al Hodiedah Governorate is located at the east side of the red sea, north side of Taiz governorate and south side of Hajjah governorate. It is characterized by its flat sandy terrain and its hot climate specifically in the period April-August as well as its high humidity due its location by the sea.

4.1 Climate and weather

Al Hodeida governorate has a semi-arid climate, characterized by cold nights and hot days where the yearly evapotranspiration is 2 to 4 times higher than the yearly precipitation. Its elevation ranges between 5-135 above MSL. Mean temperatures range between 26 and 37 degrees centigrade. The hottest month is July and the coldest is January. The area is characterized by a relatively low average yearly rainfall between 3 mm and 18 mm. Rainfall, however, can reach 23 mm. It starts raining from June and intensifies towards the end of August and decreases and stops between September and October and intensifies again in November and December. The rainfall recharges the groundwater but also runs on the ground surface in the valleys (Wadis).

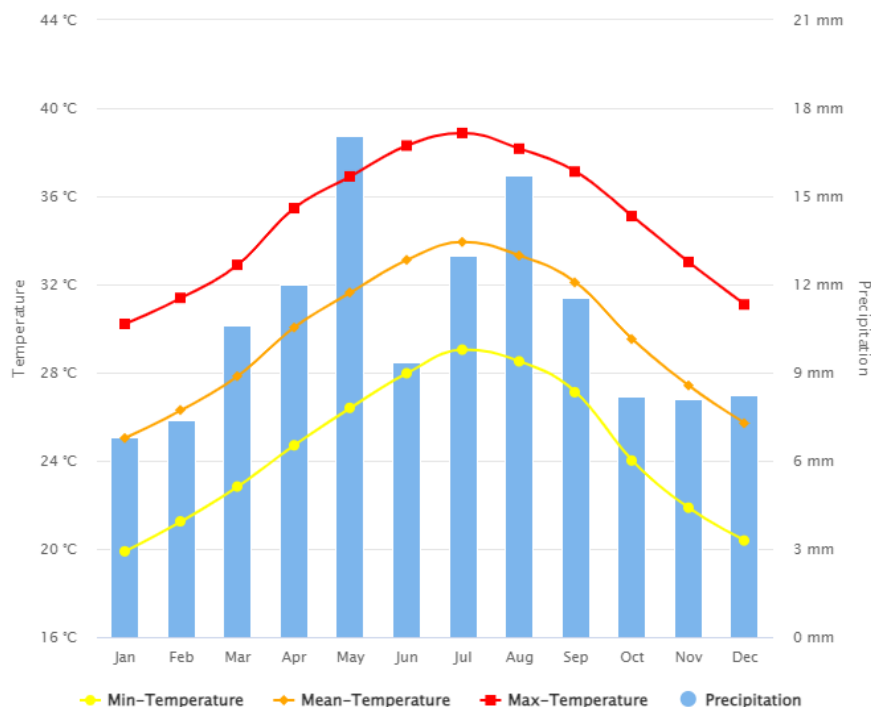


Figure of Al Hodeidah Monthly Climatology of Min-Temperature, Mean-Temperature, Max Temperature & Precipitation 1991-2020⁵

⁵ [Yemen, Rep. - Climatology | Climate Change Knowledge Portal](#)

4.2 Geology and soil characteristics

The underlying geological strata consist primarily of sand, fertile soil and diverse types of aggregates brought down by floods (result of rainfall over the mountainous catchment areas). Construction of longitudinal drain ditches, rehabilitation of existing cross drain culverts, and construction of additional cross drain culverts were allocated at critical points in the project design and were included in the BoQ.

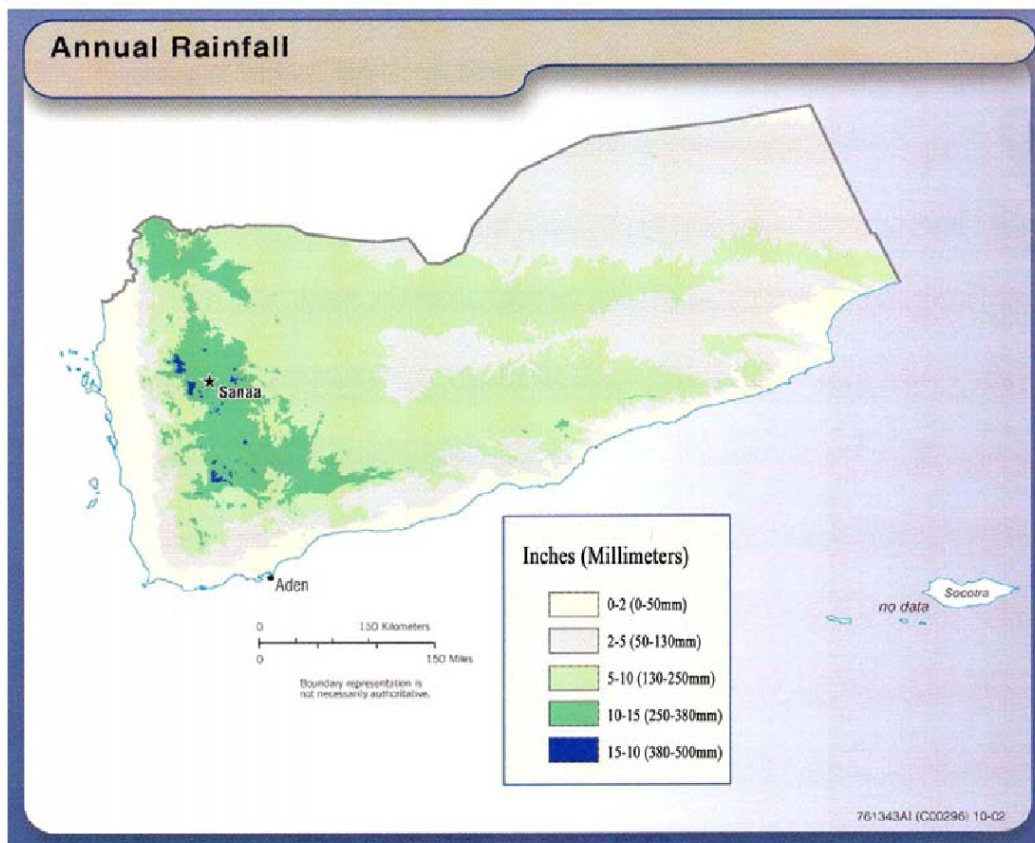
4.3 Water resources and hydrology

Several temporal water streams cross the existing road. A hydrological study was conducted and different culverts were located at the water crossings to prevent disruption of the natural watercourses. The agricultural season in Al Hodeidah Governorate lasts around 110 days. Water harvesting enables farmers to supplement rainfall with runoff water gathered from uncultivated areas and roadways and conveyed to cultivated lands,

The rolling and mountainous areas that have quite high topography, and consist of mostly sedimentary rocks, represent the runoff zone in the sub-project area. Absorption zone is represented by the flat section (at or before the beginning of the road) which has low slope and is composed of alluvial deposits and soils. The nature of these materials permits infiltration of water to the subsurface environment and then acts as an absorption and infiltration zone to the ground water and major wadi areas at low locations. Several systems could be used as water harvesting systems in the area including:

A – Irrigation from groundwater for agriculture purposes

B – Direct discharge to a nearby farm, from other side farms across the channel.



4.4 Air quality and noise

In general, there is a lack of air quality data in Yemen and specifically for Al Hodeidah and the road subproject area. High level of dust covering all the vegetation along the road was noticed during the site visit.

Noise is seen as a minor concern in Yemen, the concept of noise pollution is not readily recognized, and the potential adverse impacts on health are not generally understood. On the other hand, typical existing noise levels near the project site are generally limited because the project site is located in a relatively underdeveloped area.

4.5 Biological resources

The observed fauna and flora in the subproject area are not those of particular interest and no protected or endangered species were identified.

The road rehabilitation will not affect any sensitive, specially designated area or protected species as they are not present in the working area. Most likely since the project is rehabilitation of an existing road, disturbance to wildlife will be minor, temporary and localized and mostly due to noise and air emissions. With proper management of air, noise, waste and air emissions this impact during rehabilitation will be negligible.

4.6 Cultural and historical sites

The subproject will be implemented within the existing unpaved road in which there is no record for any archaeological or historical sites. The subproject will be limited to improving the existing road condition which shall not result in any impact on the cultural heritage.

4.7 Socioeconomic aspects

Ministry of Public Works and Highways (MPWH) 2013 appraisal report indicates that there are around 2,200 KM of roads in Al Hodeida of which around 1,159.70 km are asphalted and the rest are gravel topped or earthen roads. Some residential units do not have any access to a transport network.

The targeted road is suffering from the bumpy and unpaved areas with risky characteristics during the rainy and windy weather. This situation makes the movement of cars restricted resulting in difficulties for people to access services such as hospitals, schools, and markets as people spend many hours crossing through these roads; this has also affected the cost of living as the transportation and commodities prices in the targeted area is very high, which also causes a delay in the development process.

Majority of the local communities are working in agriculture and some of them work in the governmental sector. The agriculture activities are dependent on seasonal rainfall and irrigation from wells.

Subproject will highly contribute to improving the living conditions of about 298,840 people of which 152,240 are males and 146,600 are females According to the 2014 Households Budget Survey, 58.1% of residents of the governorate were under the poverty threshold. Since Al-Hodeidah has been a site of active fighting with hundreds of thousands displaced, this rate has dramatically increased during the past few years of the war. Current estimates suggest that the poverty rate may well have reached 80-90% in the governorate. 90 The Interim Food Security Classification for 2019 ranks Al-Hodeidah as the governorate with the highest levels of poverty in Yemen.

Local communities including people with disabilities and their dependents and settlements would benefit from such subprojects during and after the rehabilitation work. The density of the population in the villages along the road will be increased and those who left their areas to the neighboring

towns due to lack of services will return back. Furthermore, the chances of work employability will also increase.

Table 5 Population and Settlements of Al Hodeidah Governorate

Governorate	No. of Districts	2021 Estimation			
		Male	Female	Total	Area KM ²
Al Hodeidah	26	2,022,512	1,816,341	3,838,853	117,145

4.8 Resources and services' access restriction

The subproject will not cause restrictions for the services or resources. The implementation will follow effective measures to avoid complete closure to the road. The works will be implemented section by section, shortening implementation periods, in addition to other mitigation measures, such as informing the public about implementation schedules. There will be close coordination with local authorities and communities to ensure smooth implementation and to avoid any potential impacts on services and resources access.

The nature of intervention will not cause complete closure to the road as it will be conducted section by section. There will be strict control and management for traffic by arranging detours and alternate bypass for traffic and roadside residences & businesses for each site using traffic cones, barriers, fences, or lights as appropriate in coordination with traffic officers and according to the work and traffic plan provided by the contractor (C-ESMP) and approved by UNOPS and RAP. Moreover, there will be an action plan which will include arrangements for each section that will be prepared by the contractor in liaison with the supervision firm and authorities. The contractor will not start any rehabilitation activities until the plans approved by RAP and UNOPS and the installation of traffic safety and control safeguards. Specific pedestrian pathways which will let people access services near worksites, will be specified.

5. Environmental and social impacts assessment

5.1. Applicability

The YELCP ESMF as well as the other project documents and requirements described in the introduction of this ESMP apply to this intervention.

5.2. Eligibility (Exclusion List)

The subproject is eligible for support because it does not have any of the attributes in the following exclusion list.

Table 6 Subproject exclusion list

#	Statement	Yes	No
1	Production or activities involving harmful or exploitative forms of forced labor/harmful child labor;		X
2	Production or trade in any product or activity deemed illegal under host country laws or regulations or international conventions and agreements;		X
3	Production or trade in weapons and munitions;		X

#	Statement	Yes	No
4	Gambling, casinos and equivalent enterprises;		X
5	Trade in wildlife or wildlife products regulated under Convention on International Trade in Endangered Species (CITES);		X
6	Production or trade in radioactive materials;		X
7	Production or trade in or use of unbonded asbestos fibers;		X
8	Production or trade in wood or other forestry products from unmanaged forests;		X
9	Production or trade in products containing Polychlorinated biphenyls (PCBs);		X
10	Production, trade, storage, or transport of significant volumes of hazardous chemicals, or commercial scale usage of hazardous chemicals;		X
11	Production or trade in pharmaceuticals subject to international phase outs or bans;		X
12	Production or trade in pesticides / herbicides subject to international phase outs or bans;		X
13	Production or trade in ozone depleting substances subject to international phase out;		X
14	Production or activities that impinge on the lands owned, or claimed under adjudication, by indigenous peoples, without full documented consent of such people;		X
15	Power plants;		X
16	Large-scale transport infrastructure such as highways, expressways, urban metro-systems, railways, and ports;		X
17	Investments in extractive industries; commercial logging;		X
18	Dams, or projects involving allocation or conveyance of water, including inter-basin water transfers or activities resulting in significant changes to water quality or availability;		X
19	Activities that would significantly convert natural habitats or significantly alter potentially important biodiversity and/or cultural resource areas;		X
20	Activities that would require the relocation of residential households and/or significant involuntary land acquisition ⁶		X
21	Activities in disputed areas.		X

5.3. Environmental and social screening form

Following the YELCP ESMF, the following form has been used to screen the potential environmental and social risks and impacts of the selected subproject. The risk level of this subproject is estimated to be moderate, which requires preparation of ESMP. The preparation of ESIA for this subproject is not required as detailed in the YELCP ESMF as the subproject will mainly be rehabilitation and

⁶ A due diligence was conducted to assess whether any of the subproject road sections led to ESS 5 impacts and it concluded that there is no impact. Due diligence report is available in annex 6 of this ESMP.. Annex 7 includes data on the relocation activities that might take place under the subproject.

Rehabilitation of Bajil–Al Gonaydeah–Assalif Rural Road ESMP

rehabilitation of existing unpaved road in the same right of way. There will be no resettlement or displacement under this subproject. Site specific impacts may be triggered include noise, dust emission, disruption of traffic, waste disposal, hazardous materials and wastes, soil, surface and groundwater contamination from oil, fuel and chemical spills and safety risks for workers and community including occupational health and safety. Minor, short term and localized air pollution might be caused due to dust generation or excavation works. Little noise from subproject rehabilitation is expected during implementation due to the use of heavy equipment. The impact on air quality and noise is limited and they are seen as minor concerns. The corresponding mitigation measures for potential impacts are included in this ESMP and the environmental and social requirements for contractors will be included in the tender documents and contract. All environment, social, health and safety mitigation measures will be included in the implementation contract. In addition, items for environmental and social safeguards requirements including OHS are included in the tender documents.

Table 7 Environmental and social screening form

Subproject Name	Bajil–Al Gonaydeah–Assalif Rural Road Rehabilitation
Subproject ID	ELCP-HOD-001
Subproject location	Al Hodeidah governorate.
Implementing Partner	RAP
Estimated Investment	
Was the site visited beforehand	Yes
Estimated Start/Completion Date	18 months from date signing the contract
Observations/Comments	Indicated below
Signature of Environmental and Social Safeguards Officer (ESSO)	
Signature of Program Manager	

Question	Answer		ESS relevance	Due diligence/ Actions
	Yes	No		
Does the subproject involve civil works including new construction, expansion, upgrading or rehabilitation of existing infrastructure?	X		ESS1	ESMP, SEP
Does the subproject involve land acquisition and/or restrictions on land use? ⁷		X	ESS5	SEP
Is the subproject associated with any external waste management facilities such as a sanitary landfill, incinerator, or wastewater treatment plant?		X	ESS3	ESMP, SEP

⁷ A due diligence was conducted to assess whether any of the subproject road sections led to ESS 5 impacts and it concluded that there is no impact. Due diligence report is available in annex 6 of this ESMP.. Annex 7 includes data on the relocation activities that might take place under the subproject.

Question	Answer		ESS relevance	Due diligence/ Actions
	Yes	No		
Does the subproject have an adequate system in place (capacity, processes and management) to address waste?	X		ESS1, ESS3	ESMP
Does the subproject involve the recruitment of workers including direct, contracted, primary supply, and/or community workers?	X		ESS2	LMP, SEP
Does the subproject have appropriate OHS procedures in place, and an adequate supply of PPE (where necessary)?	X		ESS2	LMP
Does the subproject have a GM in place, to which all workers have access, designed to respond quickly and effectively?	X		ESS10, ESS2	SEP, LMP
Does the subproject involve use of security or military personnel during construction and/or operation of healthcare facilities and related activities?		X	ESS2, ESS4	ESMP, LMP, SMP
Does the subproject establish and implement an appropriate quality management system to anticipate and minimize risks and impact that services may have on community health and safety?	X		ESS2, ESS4	ESMP, LMP GBV Action Plan
Does the subproject apply the concept of universal access where technically and financially feasible?	X		ESS4	ESMP, SEP
Is the subproject located within or in the vicinity of any ecologically sensitive areas?		X	ESS6	ESMP, SEP
Is the subproject located within or in the vicinity of any known cultural heritage sites?		X	ESS8	ESMP, SEP
Does the project area present potential Gender-Based Violence (GBV) and Sexual Exploitation and Abuse (SEA) risk?		X	ESS1	ESMP, SEP, GBV Action Plan

6. Risk level and mitigation instruments

6.1 Labor management

While a substantial number of jobs will be created through the subproject lifetime, it is not expected that the labor influx will be experienced as most of the workers required by contractor will be sourced locally from the same communities.

The subproject is expected to provide approximately 28,150 labor days over the course of its life cycle, with 19,593 labor days by semi-skilled workers and 8,557 labor days by unskilled workers for which the contractor is accountable.

The contractor shall protect the workers from any risk that may be encountered during the implementation including exposure to the COVID-19 virus.

The contractor shall maintain occupational health and safety system in the site to protect workers from hazards and risks and provide adequate health and safety training, required PPE, first aid box, potable drinking water and mobile gender-segregated toilets with a sewage pipe attached to a properly insulated/lined and covered cesspit that will be backfilled once the job is over.

For the potential risks and impacts associated with labors, discrimination in employment can occur in the workplace in various ways, such as unequal paypaid less, inappropriate treatment of workers and disproportionate selection and termination.

Child labor is totally prohibited in the subproject. No child labor will be hired in implementation and the contractors are forbidden to hire a person under the age of 18 years. The minimum age of workers has been specified in the tender documents for contractors. On the other hand, forced, involuntary or unpaid labor will not be used in any work under the subproject. A labor log including names, ages and other details will be managed by the contractor, and all workers will be registered. RAP and UNOPS will regularly monitor this issue and will verify the registers as well as the workers onsite.

The Contractor shall put in place a Grievance Mechanism for workers and the workers of its subcontractors that is proportionate to its workforce. The GM shall be distinct from the Project level Grievance Mechanism for affected individuals and communities. Contractor GM system shall be communicated to all workers with a transparent mechanism in addition to ensure confidentiality. Further details on the workers GM requirements are available in annex 1 hereinafter.

6.2 Occupational health and safety impacts

The subproject assigned risk is moderate, thus actions are required to minimize the risk of OHS of workers due to poor construction practices, inadequate site management or faulty design and equipment.

Therefore, UNOPS will include environmental and social requirements for contractors including all OHS requirements, as well as Health and Safety prevention measures from COVID-19 in the contract and tender documents.

UNOPS will ensure that

1. Relevant site specific OHS requirements that are incorporated within this ESMP are included in the tender documents and contract to ensure that the contractor fully avoids or mitigates environmental, social, occupational health and safety impacts that might arise from this activity.

UNOPS will also require that contractor

1. Fully implement permit to work system, method of statement and job safety analysis to ensure all tasks are well prepared and follow all necessary safety mitigation and prevention measures.
2. Provide safety training to all workers including lifting operations, electrical work, Excavation, waste management, manual handling and permit to work before commencing any work.
3. Provide the required safety and health PPE and hygienic materials to workers to protect workers and ensure their safety and prevent them from Covid-19 infection.
4. Provide appropriate training on the use, serviceability and integrity of the necessary PPE.
5. Prepare emergency response plan including contact numbers, evacuation plan and provide necessary first aid equipment on site and transportation and contracted nearest hospital in case of any emergency.

COVID-19

This subproject, like other sectors, will be under the risks of Covid-19 pandemic. The precautionary measures against it were applied during the preparation period and it will be strictly applied in the subproject worksites and workers' accommodation place during implementation.

UNOPS will require the contractor to implement extra measures during COVID 19 Pandemic, including the following prevention measures to protect workers and will depend on emphasizing basic infection prevention measures and all contractors/suppliers should implement good hygiene and infection control practices, including but not limited to:

1. Promote frequent and thorough hand washing, including by providing workers, customers, and worksite visitors with a place to wash their hands. If soap and running water are not immediately available, provide alcohol-based hand rubs containing at least 60% alcohol.
2. Encourage workers to stay home if they are sick.
3. Encourage respiratory etiquette, including covering coughs and sneezes. Additionally, adhering to wearing masks and social distancing.
4. Provide customers and the public with tissues and trash receptacles.
5. Provide flexible working hours (e.g., staggered shifts) if possible, to increase the physical distance among employees and between employees and others if state and local health authorities recommend the use of social distancing strategies.
6. Discourage workers from using other workers' phones, desks, offices, or other work tools and equipment, when possible.
7. Maintain regular housekeeping practices, including routine cleaning and disinfecting of surfaces, equipment, and other elements of the work environment. When choosing cleaning chemicals, employers should follow the manufacturer's instructions for use of all cleaning and disinfection products (e.g., concentration, application method and contact time, PPE).
8. Workers should wear masks, gloves and goggles at all times on the site.

6.3 Environmental and social impacts

Implementing the rehabilitation works of this subproject will definitely have positive environmental and social impacts represented mainly by improving the pavement condition, improving access to services and upgrading the environmental condition toward climate change resilience. However, there will be temporary, and localized controlled impacts. The selection of the activities takes into consideration sustainability, climate change resilience and priority needs identified in consultations with local authorities and local communities. The subproject will maximize the use of local labor to support local communities and IDPs.

The potential impacts associated with the rehabilitation activities of the subproject were identified based on the ESMF general and specific impacts as well as based on the specific road characteristics, screening checklist and the expected intervention. The field visit to the subproject sites was conducted in May 2022 in which the screening checklist components were verified and prepared as shown above.

The subproject does not involve any land acquisition and/ or restrictions on land use and it is not expected to have impacts on local biodiversity.

In addition, it is expected to face a temporary disruption of traffic activities and traffic congestion. Minor, short term and localized air pollution may be caused due to excavation works. Little noise from subproject rehabilitation is expected during implementation due to the use of heavy equipment. These highlighted potential impacts will be addressed and mitigated by the necessary matching mitigation measures and full implementation of this Environment and Social Management Plan. However, there are many positive impacts which will be attained, particularly increased level of service for the maintained and rehabilitated road to good conditions and prevention of further deterioration, improving drainage, environment, health and safety conditions. The subproject will also provide an improved environment for area dwellers, creation of local employment through road rehabilitation works and local economic development. It will improve access to health and education services. Generated waste will be deposited at external waste management facilities represented by the public landfill in Al Hodeidah Governorate. This document includes a waste management

guidelines for the contractor to deal with all issues related to waste from waste generation until disposal in coordination with local authorities and landfill management.

The subproject involves recruitment of workers by the contractor in which the project LMP will be applied. Furthermore, the subproject has appropriate OHS procedures in place so that the contractor is going to prepare C-ESMP and appoint an OHS officer for the subproject as well as supply adequate PPE.

RAP and UNOPS has strong monitoring and inspection on daily, weekly and monthly basis to ensure complete compliance particularly to OHS measures. The subproject has established and implemented an appropriate quality management system to minimize risks and impacts those services may have on community and safety; RAP has close coordination with local authorities and plans to establish a community committee to facilitate implementation and enhance coordination with utilities.

Gender and Social -related issues

The beneficiaries, males and females, have been considered during the consultation process for this subproject and will be considered during implementation stages. Their views and needs are taken into consideration during consultations and preparation, and they will be applied in all phases. The consultations with men and women, which were updated in May 2022 at the subproject in different areas in the forms of face-to-face interviews and group discussions, addressed the social issues including community needs, concerns, rights, and risks. The participants in consultations confirmed the selection priority needs. They showed their complete support for implementation. SEA is considered properly during preparation and consultations and low concerns were raised about such issues. This will be paid special attention during implementation. The gender and social-related issues are also detailed in the consultation section below. In fact, the subproject will contribute to improving living standards, facilitate access to school, hospitals, markets, etc. The population of Al Hodeidah Governorate (women and men) including vulnerable groups, such as IDPs, persons with disabilities, marginalized people, and children will be benefiting from the subproject. The interventions will generate positive impacts on the livelihoods of the beneficiaries and the subproject environment.

CGender

Gender equality to the possible extent has been considered during subproject consultations and it is a core principle for all subprojects. Gender mainstreaming is considered in all aspects of the YELCP. The gender issues among others were discussed. They were informed about gender mainstreaming, rights, roles, and other important issues, such road safety and GM, GBV, etc. Thus, a community committee will be established including men and women to participate in implementation monitoring and ensure sustainability as a part of gender mainstreaming. Gender mainstreaming and equality will be included in the training and awareness-raising and in implementation as possible.

Gender-Based Violence GBV and Sexual Exploitation and Abuse SEA

RAP raised the awareness of community members for men and women on GBV & SEA during the public consultation process as well as on GM processes and how they can be used to report gender-based violence, gender discrimination and SH/SEA cases with the highest level of confidentiality and anonymity of complaints. RAP plans to conduct training for contractors and engineers about GBV, SH/ SEA and GM. They will be informed about national laws that make sexual harassment, abuse, and gender-based violence a serious and punishable offense. The contracts with contractors will include a Code of Conduct which will highlight the GBV, PSEA and SH. RAP is currently preparing a policy for GBV, PSEA/SH.

Furthermore, UNOPS has already taken the following steps in regards the GBV/SEA/SH issues

1. In the stakeholder consultation meetings UNOPS has presented the project GBV SEA/SH

action plan and during the meetings. Although the consultation meeting contains both males and females, we paid more attention to females' participants and ensured to explain about the GM mechanism and highlighted how it is transparent, secure and confidential to use any of the GM access point

2. UNOPS has developed visibility materials to promote awareness for PSEA/SH in local language (Arabic) the materials and messages used are adapted to be suitable for the Yemen context and sensitivity of the subject.
3. GM focal point received specialized training about SEA/SH cases and the way to deal with it using Victim centered approach
4. UNOPS developed SOP and protocol for GM in how to deal with SEA/SH cases.
5. UNOPS has conducted refresh sessions for Project Personnel in GBV/SEA/SH and trained retainers' sites engineers as well
6. UNOPS has prepared risk assessment tools for GBV and will require contractors to fill out a checklist on GBV/SEA/SH and to prepare a code of conduct for their workers/staff.
7. As part of the YELCP GBV SEA/SH action plan UNOPS will roll out SEA/SH prevention and response plans for contractors, where the contractors need to prepare the action plan as part of the tender documents. UNOPS is supporting to enhance the contractors' capacity in this area since they have zero knowledge and capacity. Hence, UNOPS developed a contractors action plan template, which covers the most priority areas. Moreover, UNOPS conducted an induction session for contractors about this requirement and presented to contractors on how to prepare their own GBV SEA/SH prevention and response plans (GBV Action Plans) using the developed template. In addition, in depth training sessions will follow and will continue during project life span
8. UNOPS will train contractors' PSEA/SH focal points
9. UNOPS will require contractors to employ at least 5% female staff to encourage gender mainstreaming.

Conflict sensitivity and Do Not Harm

During public consultations at all levels, RAP investigated whether the subproject was a priority, free of conflict, or had negative effects on the implementation. Accordingly, it was ensured that the subproject is an urgent priority for the community and beneficiaries and it is completely supported by various stakeholders and all consulted persons expressed their satisfaction with the selection. Moreover, it was proven that the subproject is free of conflict sensitivity and any negative effects that may hinder implementation according to screening and consultations. In general, the subproject will improve the condition of the road which in turn will strengthen community and climate change resilience and improve their living conditions.

UNOPS has established GM system with the following contact channels: UNOPS/Sana'a – Toll Free Number 8000190 - Tel: 01 504914/915 - SMS:739888388 Email: GRM.yemen@unops.org for Yemen Emergency Lifeline Connectivity Project (YELCP) to enable beneficiaries to communicate their concerns regarding the project activities. Further details on the Project GM available in section 9 hereinafter

In addition, hard copies of the translated forms of GM (which is attached in Annex 2) was provided to the interviewed people and they have been informed about the GM contact information that will be also posted at the subproject site signboard to ensure any grievance can be addressed in an amicable manner. Resolving complaints at community level is always encouraged to address the problem that a person may have during the implementation and/or operational phase.

The contractor and workers should sign the Code of Conduct, UN/UNOPS CoC for contractor firms and example of personnel CoC is available as part of annex 1, and ensure workers respect and adhere to the Code of Conduct CoC to respect the local community cultures, and adhere to the social safeguard issues on Gender, SEA/SH and GBV. Raise awareness on the GM system and how it can be used to report any GBV cases.

Training of workers: UNOPS and Contactor should provide the workers with required training and daily toolbox talk in the OHS, GBV, SEA and GM.

6.4 Environmental and social management plan

UNOPS and RAP will ensure implementation of proper mitigation measures for the potential impacts by including environmental and social requirements for contractor and OHS requirements in the contract and ensure that contractor’s personnel are familiar with such clauses, as well as requiring contractors to comply with the World Bank Environmental, Social Health and Safety (ESHS) Guidelines and National Labor Law (Decree 5/1995) and applicable International Labor Organization conventions on workplace conditions. Community committee will play a role in monitoring project progress including the environmental and social safeguards implementation in close coordination with RAP and UNOPS.

The following table includes the mitigation measures for the potential risks and impacts:

Table 8 Environmental and Social Management Plan

Potential impact	Mitigation measures	Implementation responsibility	Monitoring responsibility	Cost
OHS Impact				
Work related accidents and injuries	<ul style="list-style-type: none"> - Maintain insurance coverage for workers in subproject sites according to the requirements and conditions of insurance in the bidding documents which should comply with labor law, UNOPS and the World Bank requirements. - Provide occupational health and safety training to all workers involved in the subproject. - Provide protective masks, safety helmets, goggles, shoes and overall safety materials as appropriate. - Provide workers in high noise areas with earplugs or earmuffs. - Ensure availability of first aid boxes at the work areas with trained staff on the emergency response. - Following driving safety instructions i.e., trained/qualified drivers, following speed limits, using well maintained trucks. - Heavy equipment must be inspected on a daily basis to ensure integrity and to rectify any failures. - The contractor shall maintain a banksman for heavy equipment in work sites. - The contractor shall prepare an emergency plan with the C-ESMP to address the related emergencies. - Ensure air and noise mitigation measures stated previously are well implemented - No explosives to be used in the project or activities related to the project. - Avoid working in extreme environments/weathers conditions. - Add warning signs at a safe distance from the targeted road sections to warn drivers about the rehabilitation work and to prevent them from running into workers while doing their work. - Train workers in manual handling as well as recognition of symptoms of heat exposure. 	Contractor	Contractor, RAP, UNOPS and TPM	Included within the subproject cost

Potential impact	Mitigation measures	Implementation responsibility	Monitoring responsibility	Cost
	<ul style="list-style-type: none"> - Shorten exposure time to heat or stress through frequent rest breaks. - Provide appropriate potable drinking water - Awareness needs to be provided to workers on the importance of maintaining body fluids and avoiding dehydration. - Excavated zones shall be properly fenced and marked to avoid falling. - Work at height areas shall be properly marked and controlled, workers shall be trained on the work at height protection measures as well as provided with the required fall protection PPE. Any work at height platforms shall be properly secured and inspected regularly. 			
<p>Risk to workers from hazardous material used for work, such as fuel, lubricating oil, bitumen paints and chemicals.</p>	<ul style="list-style-type: none"> - Workers need to be trained on the handling procedure for hazardous materials and wastes. - Hazardous substances shall be stored properly in dedicated areas following the Material Safety Data Sheets (MSDSs) as well as the national and international guidelines including the World Bank and UNOPS Environmental Health, and Safety (EHS) Guidelines. - Ensure availability of fire extinguishers and the workers need to be trained on the emergency response measures. - Storage areas shall be provided with clear identification, labeling, storage, no smoking signs. - All workers handling the cement and hazardous substances shall be provided with adequate PPE relevant to their tasks.. - Flammable materials shall be stored in well ventilated and insulated areas, inaccessible to the public. 	<p>Contractor</p>	<p>Contractor, RAP, UNOPS and TPM</p>	<p>Included within the subproject cost</p>
<p>Poor onsite sanitation or water supply, leading to illness and disease.</p>	<ul style="list-style-type: none"> - Provide workers with access to toilets and sanitation premises including the soap and tissue, through renting toilets and/ or contracting with public toilets close to the working sites. - In case of mobile toilets, ensure that they are properly insulated and located away 	<p>Contractor</p>	<p>Contractor, RAP, UNOPS and TPM</p>	<p>Included within the subproject cost</p>

Potential impact	Mitigation measures	Implementation responsibility	Monitoring responsibility	Cost
	<p>from drainage and runoff zones. Ensure cesspits are properly lined and covered.</p> <ul style="list-style-type: none"> - Provide potable drinking water through distributing drinking water containers/ bottles for all working sites - Ensure proper housekeeping practices are maintained - Ensure all surfaces are free from oil, grease or any other contaminants, particularly soluble contaminants. - Provide and implement safety precautions onsite during implementation of the subproject. 			
Risk of Manual Handling	<ul style="list-style-type: none"> - Avoid manual handling activities to the possible extent. - Reduce the load risk by using lighter weights or more stable containers. - Reorganize the activity to further reduce the impact on the individual(s). - Utilize mechanical lifting aids or equipment as appropriate. - Ensure appropriate rest breaks, job rotation and training for workers. - Provide PPE to the workers on a regular basis (e.g. gloves, foot protection, and non-slip footwear). 	Contractor	Contractor, RAP, UNOPS and TPM	Included within the subproject cost
COVID-19 spread causing illnesses	<ul style="list-style-type: none"> - Ensure adherence to COVID-19 precautionary measures by all workers. - Ensure face masks are available and used by all workers. - Ensure awareness sessions are conducted on COVID-19 with all workers. - Ensure availability of hygiene kits, soap, clean water, and hygiene etiquette is followed. - Ensure social distancing is applied in the worksite. 	Contractor/ workers	Contractor, RAP, and UNOPS	Included within the subproject cost
Working at quarries and transporting stones	<ul style="list-style-type: none"> - Use of explosives is forbidden in any of the project activities. This is clearly communicated to all communities. - Ensure all workers are aware of the dangers of using explosive materials. - Report and address any serious workplace accident or incident immediately within 	Contractor/ workers	Contractor, RAP, and UNOPS	Included within the subproject cost

Potential impact	Mitigation measures	Implementation responsibility	Monitoring responsibility	Cost
	<p>24 hours</p> <ul style="list-style-type: none"> - Providing high visibility clothes for those who work in quarries. - Ensure activity is done by skilled workers from the targeted areas and in case the skilled workers are not available in the targeted areas, skilled workers from other neighboring area will be employed for the task - Prior awareness of laborers of the potential risks resulting from execution of work activities - Selecting site of stone quarries away from the population gatherings and agricultural lands - Ensure that the quarries are safe and construct barriers to protect workers from falling. - Ensure that quarries are safe to extract the stones and there is enough space for safe work and inspect quarry before cutting stones - Ensure quarries are not ecologically sensitive zones - Ensure workers obtain stones from areas with low risk of falling rocks. - Make sure that the rocks are cohesive and not lose to ensure that the rocks do not fall out - Checking daily the condition of the rocks and soil, especially after rain and the use of compressors. - Daily awareness of the mechanism of cutting rocks is done in a safe way and it is forbidden to cut rocks from the bottom or from the top - Conduct awareness sessions about handling materials and motivate workers to ask for help from other workers when performing heavy tasks. - A periodic inspection by the supervising staff is to be done - Organizing and arranging labor at the site of stone quarries to avoid congestion between working groups. - Check the efficiency and insulation of electrical wires of mechanical cutting 			

Potential impact	Mitigation measures	Implementation responsibility	Monitoring responsibility	Cost
	<p>equipment (Air Compression Machine).</p> <ul style="list-style-type: none"> - Drivers are to be aware of the importance of periodic maintenance and inspections of stone transporting vehicles and are to be committed to do so. - Emergency response plan is prepared, and all workers are aware of it - Ensure workers obtain rocks from areas with very low risk of falling if possible. - Provide safety ropes if workers are working at high areas while cutting stones or any other sites located at high areas with high risk of falling etc. - Ensure areas where rocks are obtained have no potential risks of falling rocks or have barriers for falling rocks. - Regular break to workers to reduce the sun impact and exhaustion and provide drinking water. - Ensure no child labor or forced labor used in quarries. 			
Risk of electrical shock	<ul style="list-style-type: none"> - Minimize the potential for water or chemical spills on or near electrical equipment. - Use safe work practices every time electrical equipment is used. - Disconnect the power source before working on the electrical poles or connections.. - Ensure that workers are wearing suitable PPE - Avoid working during rainy seasons. - Workers on electrical connections or poles should be qualified and trained. 	Contractor	Contractor, RAP, UNOPS and TPM	Included within the subproject cost
General environmental impacts				
Dust generation during excavation, backfilling, and compaction of the pavement layers. Air pollution due to emissions from machinery and	<ul style="list-style-type: none"> - Properly use dust control methods, such as covers, water suppression, or increased moisture content for open materials storage piles, or controls, including air extraction. - Ensure spraying water efficiently during dust suppression to avoid wasting water. Water spraying can be carried out by using gray-water if available or collected rainwater where possible. 	Contractor	Contractor, RAP, UNOPS and TPM	Included within the subproject cost

Potential impact	Mitigation measures	Implementation responsibility	Monitoring responsibility	Cost
vehicles.	<ul style="list-style-type: none"> - Reduce the amount of water used to control dust, and use sweeping practices rather than washing. - Conducting cleaning activities away from drainage structures. - Reduce dust generation due to cutting work by spraying water when needed and avoiding spraying water where electrical live lines are presented. - Cover open bodied trucks handling sand, gravel or remains. . - Regularly clean road surfaces within the rehabilitation sites to remove accumulated fine material, and regularly clean transportation vehicles. - Ensure turning off vehicles and machinery when not in use to reduce NOx and CO and PM emissions from machinery and vehicles used. - Properly and regularly maintain machinery to minimize exhaust emissions, suspended particulates and fumes, in particular by ensuring that the engine, injection system and air cleaners are in good condition. 			
Increased levels of noise and vibration due to heavy vehicles and equipment, which may be a nuisance to the community around the rehabilitation sites.	<ul style="list-style-type: none"> - Use well-maintained and inspected equipment. - Shut down equipment when not in use. - Use operational noise mufflers. - Limit noisy activities to normal daylight hours. - Limit vehicle speed at critical locations. - Provide advance notice to occupants if an activity involving high level impact noise is in close proximity to buildings. 	Contractor	Contractor, RAP, UNOPS and TPM	Included within the subproject cost

Potential impact	Mitigation measures	Implementation responsibility	Monitoring responsibility	Cost
Disruption of environment by borrow pits and quarries	<ul style="list-style-type: none"> - Materials required for rehabilitation and rehabilitation must be obtained from approved borrow areas and quarries and avoid ecologically sensitive zones; - If a contractor should seek to develop, operate and reinstate borrow pits and /or quarries, the contractor will adhere to the following: - Inform RAP and UNOPS about developing and operating or reinstating borrow pits and/ or quarries for approval. - Obtain all necessary permits for borrow pits and quarry operations. - Locate quarry sites as far away from settlements as possible. - Locate borrow pits and quarries at least 100 m from watercourses or human habitations. - Fence and secure quarry sites. - Conduct a pre-blasting inspection/survey, in consultation with residents/property owners, prior to operating a quarry, to document the existing condition of buildings and identify any sensitive structures, building components or contents. - Locate, to the extent possible, publically authorized and licenced borrow pits on land that is not used for cultivation and is not wooded. - The use of explosives is prohibited. - Apply all the working conditions and labor requirements. 	Contractor	Contractor, RAP, UNOPS and TPM	Included within the subproject cost
Leakage of vehicles lubricants and oil in worksites.	<ul style="list-style-type: none"> - Avoid any leakage of oil in the worksite. - Avoid refueling vehicles or changing lubricants in places on site other than allocated locations. - Use impervious surfaces for refueling areas and other fluid transfer areas. - Provision of spill prevention kits in the work area, carry out appropriate collection and cleaning of areas in case of leakage. 	Contractor	Contractor, RAP, UNOPS and TPM	Included within the subproject cost

Potential impact	Mitigation measures	Implementation responsibility	Monitoring responsibility	Cost
Soil/ groundwater/ runoff contamination	<ul style="list-style-type: none"> - Pave in dry weather to prevent runoff of asphalt or concrete materials and avoid working during rainy seasons - Cover storm drain inlets and manholes during paving operations - Conduct cleaning activities away from drainage structures - Properly store all types of waste and hazardous chemicals if any in insulated areas to avoid spillage and away from runoff areas and soil - Ensure mobile latrines if used are insulated from the ground and located away from runoff zones as well as their cesspits and ensure they are properly covered in which any waste shall be disposed in the public sewage or authorized locations - Remove spills if any regularly - Ensure concrete mixing if any is done at designated insulated areas away from soil, and water drains. - Ensure hazardous chemicals and waste, if any, are stored, handled and disposed of according to their Material Safety Data Sheets. - Construction waste should be stored and handled in designated areas away from the soil and water runoffs. Ensure no clogged runoffs/drainage zones. 	Contractor	Contractor, RAP, UNOPS and TPM	Included within the subproject cost
Blockage of culverts, drainage ditches, stormwater catchment basin and channels	<ul style="list-style-type: none"> - Clean and maintain drainage structures. - Provide adequate drainage works. 	Contractor	Contractor, RAP, UNOPS and TPM	Included within the subproject cost
Water logging due to inefficient drainage for surface runoff in some locations or shallow water	<ul style="list-style-type: none"> - Keeping trenches and excavations free of water. - Dewatering surface water if needed using water vacuum mobile tankers. - Provide adequate and efficient drainage for surface runoff. - Ensure proper waste management and no wastes to be stored in drainage areas 	Contractor	Contractor, RAP, UNOPS and TPM	Included within the subproject cost

Potential impact	Mitigation measures	Implementation responsibility	Monitoring responsibility	Cost
Low aesthetic value of landscape such as accumulation of waste and debris in the rehabilitation site and damaged curbs and tiles.	<ul style="list-style-type: none"> - Replant the damaged and dry trees with native non-invasive trees, available in local nurseries, in the subproject area. - Remove the accumulated wastes and debris in the work site. - Reconstruct damaged curbs, and tiles. - Rehabilitated sites must be cleaned when work is completed. 	Contractor	Contractor, RAP, UNOPS and TPM	Included within the subproject cost
Production and disposal of rehabilitation work's debris and waste materials.	<p>Loading:</p> <ul style="list-style-type: none"> - Properly collect and load the debris and domestic waste using well maintained equipment 'to suitable trucks with suitable load and put more emphasis on the safeguards requirements. Solid wastes should be stored in designated zones and away from drains and runoff zones. - Hazardous waste should be handled and stored and disposed according to their MSDSs. Storage of hazardous waste should be at designated inaccessible sites and at well insulated zones, away from runoff/ drains - The contractor should continuously remove the waste immediately and transfer it to the approved disposal site. - Minimize littering of roads by ensuring that vehicles are licensed and loaded in such a manner as to prevent falling off or spilling of construction materials, and by sheeting the sides and tops of all vehicles carrying sand, other materials or debris. 	Contractor	RAP and UNOPS Site Engineers/ Environmental, Social and OHS Specialists and Contractor's Safety Officers.	Included within the subproject cost
	<p>Transportation:</p> <ul style="list-style-type: none"> - Properly transport the loaded wastes and debris and hazardous waste (separately) by suitable trucks with emphasis to cover trucks with appropriate traps to avoid spillage during transportation. And direct the drivers to follow the driving safety instructions i.e. licensed and well-trained drivers, following speed limits, using well maintained trucks; and follow the traffic rules. 	Contractor	RAP and UNOPS Site Engineers/ Environmental, Social and OHS Specialists and Contractor's Safety Officers.	Included within the subproject cost

Potential impact	Mitigation measures	Implementation responsibility	Monitoring responsibility	Cost
	<p>Final Disposal:</p> <ul style="list-style-type: none"> - Properly dispose of solid waste at designated permitted sites, landfill allocated by the local authorities and cleaning funds; and attach the receipt of waste from the relevant landfill authorities to the site engineer. 	Contractor		Included within the subproject cost
Social Impact				
Temporary disruption of traffic and congestion due to road closure and detours.	<ul style="list-style-type: none"> - Prepare a traffic plan during implementation in coordination with the responsible authorities and affected communities. - Inform and coordinate with the local councils and traffic authority, public and roadside residents on the implementation schedule. - Shorten implementation period to the possible extent.. - Road rehabilitation to be performed in sections to avoid full closure of the road. - Control and manage traffic, by arranging detours and alternate bypass for traffic and roadside residences & businesses for each site using traffic cones, barriers, fences, or lights as appropriate in coordination with traffic officers and according to the work plan provided by the contractor (C-ESMP) and approved by UNOPS Resident Engineer and RAP. - The contractor should not start any rehabilitation activities before the installation of traffic safety and control safeguards. 	Contractor	Contractor, RAP, UNOPS and TPM	Included within the subproject cost
Temporary disruption of obtaining water and electricity during moving water pipes and electrical poles	<ul style="list-style-type: none"> - Informing locals prior starting the displacement activities of water pipes and electrical poles - Displaying signs alerting residents to the hazard of the construction zone. - Where applicable, supplying residents with several tanks of drinkable water in an emergency and ensure access to all groups particularly the vulnerable . 	Contractor	Contractor, RAP, UNOPS and TPM	Included within the subproject cost

Potential impact	Mitigation measures	Implementation responsibility	Monitoring responsibility	Cost
Temporary disruption of the construction machinery noise during the construction phase	<ul style="list-style-type: none"> - Avoid working at night hours. - Avoid exposure to a noise level greater than 85 dB(A) for a duration of more than 8 hours per day without hearing protection. In addition, no unprotected ear should be exposed to a peak sound pressure level (instantaneous) of more than 140 dB(C). - The use of hearing protection should be enforced when the equivalent sound level over 8 hours reaches 85 dB(A), the peak sound levels reach 140 dB(C), or the average maximum sound level reaches 110 dB(A). - Reduce the “allowed” exposure period or duration by 50 percent for every 3 dB(A) increase in excess of 85 dB(A). - Perform periodic medical hearing checks on workers exposed to high noise levels. - Rotate staff to limit individual exposure to high levels. - Install practical acoustical attenuation on construction equipment, such as mufflers. - Use silenced air compressors and power generators - Keep all machineries maintained, inspected and in good condition - Install exhaust silencing equipment on bulldozers, compactors, crane, dump trucks, excavators, graders, loaders, scrapers and shovels. - Installation of signs in all areas where the sound pressure level exceeds 85 dB (A). - Shut down equipment when not in use. - Provide advance notice to occupants if an activity involving high level impact noise is in close proximity to buildings. 	Contractor	Contractor, beneficiary committee, RAP, UNOPS and TPM	Included within the subproject cost
Public safety during the rehabilitation phase.	<ul style="list-style-type: none"> - Conduct management and safety plan for rehabilitation activities. - Install warning signs near and around the working sites. - Erect removable barriers in high risk areas. - Provide and maintain required barricades, guards, fencing, shoring, temporary roadways, footpaths, lighting and traffic flagging. - Protect workers and the public by covering openings and by protected fencing, barricaded and guardrails. 	Contractor	Contractor, RAP, UNOPS and TPM	Included within the subproject cost

Potential impact	Mitigation measures	Implementation responsibility	Monitoring responsibility	Cost
	<ul style="list-style-type: none"> - Protect proper shielding scaffolds. - Inform local residents and communities about risks of entering the working area. - 			
Complaints	<ul style="list-style-type: none"> - A complaints register will be kept on site and this will feed into the GM. Details of complaints received will be incorporated into the audits as part of the monitoring process. 	Contractor UNOPS, and RAP	Contractor, RAP, UNOPS and TPM	NA
Influx of non-local manual labor and risk of GBV and SEA.	<ul style="list-style-type: none"> - Ensure that local laborers are hired within the subproject to provide opportunities for local communities and to avoid labor influx to the possible extent. 	Contractor, UNOPS, and RAP	Contractor, RAP, UNOPS and TPM	NA
Sexual harassment, abuse, gender-based violence, and discrimination	<ul style="list-style-type: none"> - Contractors must address the risk of gender-based violence, SEA and SH through: <ul style="list-style-type: none"> o Mandatory and repeated training and awareness-raising for the workforce about refraining from unacceptable conduct toward local community members, specifically women. o Informing workers about national laws that make sexual harassment and gender-based violence a punishable offense that is prosecuted. o Introducing a Worker Code of Conduct as part of the employment contract, and including sanctions for non-compliance (e.g., termination). o Set up a solid GM and code of conduct and contractual provisions to prevent the act of GBV and SEA. o Adopting a policy to cooperate with law enforcement agencies in investigating complaints about gender-based violence. - Contractor and workers to sign the code of conduct, and ensure workers comply and adhere to the code of conduct. - Conduct regular awareness sessions on site in GBV prevention. - GM system shall be put in place to handle any issue on Gender SEA and GBV. 	Contractor/ RAP supervision consultant	Contractor, RAP, UNOPS and TPM	Included within the subproject cost

Potential impact	Mitigation measures	Implementation responsibility	Monitoring responsibility	Cost
Child Labor and Forced labor	<ul style="list-style-type: none"> - All workers should be more than 18 years old. - Verifying age of workers by checking IDs and official documents. - Ensure a worker log is available, and all workers are registered. - A labor log including names, ages and other details will be kept, and all workers will be registered. UNOPS will continuously monitor this issue and ensure that workers are properly paid. 	Contractor, UNOPS, and RAP	Contractor, UNOPS, and RAP	NA
Poor coordination, planning and sequencing of work could lead to the breakdown of unseen underground services networks (electric power cables, telephone lines, water distribution networks).	<ul style="list-style-type: none"> - Coordinate with local councils, community committee, and other competent utilities authorities. - Inspection of site to clearly identify any electrical hazards or other utility lines damages in the working areas. - Use the designs and plans of the underground networks in coordination with competent authorities to identify the location of the underground pipes and cables. - Repair any damage caused by the Contractor’s activities, in coordination with concerned authorities. - The contractor should coordinate with the Traffic Department to prepare a Traffic Management Plan for traffic detours to ensure traffic transfers are smoothly managed for each street/ work area with a clear plan and an engineering scheme. - Safeguard all existing structures, works, pipes, cables, sewers, or other services or installations from harm, disturbance or deterioration during rehabilitation activities. - Backfill service trenches as soon as possible after the service has been maintained and if possible, on the same working day. 	Contractor	Contractor, RAP, UNOPS and TPM	Damage cost to be covered by the contractor
Discrimination in employment can occur in the workplace in various ways	<ul style="list-style-type: none"> - The employment of all project workers be based on the principles of non-discrimination and equal opportunity and no discrimination is allowed with respect to any aspects of the employment relationship, including recruitment, compensation, working conditions and terms of employment, access to training, promotion, or termination of employment. - Rely on the relevant provisions of the Yemeni Labor Code which match ESS2 	UNOPS, RAP, Contractors and workers	Contractor, RAP, UNOPS and TPM	NA

Potential impact	Mitigation measures	Implementation responsibility	Monitoring responsibility	Cost
	requirement, most particularly Article 42 regarding the equal employment convention for women, and Articles 43-47 defining special measures to address the vulnerabilities of women workers.			
Operation and maintenance of the rehabilitated road, lack of maintenance	<ul style="list-style-type: none"> - Maintenance is required to ensure sustainability of this project. - Inform the locals on maintenance periods and ensure providing alternative road access during maintenance work - Ensure same mitigation measures are applied during maintenance works - Ensure maintenance of Right of Way through implementing integrated vegetation management - Avoid using chemical herbicides and use mechanical or biological control measures instead for maintaining plants on the RoW. 	RAP and UNOPS	Local authority	NA

7. Environmental and Social Monitoring Plan

The implementation of the mitigation measures will be monitored accordingly through daily, weekly, monthly and on a regular basis by the contractor, supervisor consultant, RAP and UNOPS engineers as well as by TPM. The following aspects will be monitored (though the list will keep updated to accommodate any emergency or updated aspects that may be recommended by the monitoring reports. Community committee will play a role in monitoring project progress including the environmental and social safeguards implementation in close coordination with RAP and UNOPS.:

Table 9 Environmental and Social Monitoring Plan

Impact/Issues	Measurements (incl. methods & equipment)	Frequency	Implementation responsibility
OHS Impact			
Work related accidents and injuries.	<ul style="list-style-type: none"> - Inspection and photographic documentation - Maintaining a record of injuries and accidents specifying cause and 	Daily	Contractor, RAP, UNOPS and TPM

Impact/Issues	Measurements (incl. methods & equipment)	Frequency	Implementation responsibility
	location - Contractors are required to provide a list of trained workers, who will be checked for their training skills and age and the measures will be implemented onsite and followed by regular monitoring visits. Indicators: - Number of reported incident - Occupational health and safety training - Documents for insurance coverage of workers----- - Number of fatalities, number of injuries.		
Risk to workers from hazardous material used for work, such as fuel, lubricating oil, paints and chemicals.	- Inspection and photographic documentation - Maintaining a record of injuries and accidents specifying cause and location. Indicators: - Number of reported incidents - Training records on the handling of hazardous materials and wastes.	Daily	Contractor, RAP, UNOPS and TPM
Poor onsite sanitation or water supply, leading to illness and disease.	- Site inspection Indicators: - Number of recorded complaints - Number of reported incidents - Presence of pests in latrines and project site - Quality of water supplied	Weekly during rehabilitation work and site inspection.	Contractor, RAP, UNOPS and TPM
Workers not wearing full PPEs	- Inspection and photographic documentation - Indicators: - Number of workers not adhering to wearing PPEs - Number of injured workers due to not adhering to PPEs	Daily	Contractor, RAP, UNOPS and TPM

Impact/Issues	Measurements (incl. methods & equipment)	Frequency	Implementation responsibility
Safety	<ul style="list-style-type: none"> - Hours worked, recordable incidents and corresponding Root Cause Analysis (lost time incidents, medical treatment cases, first aid cases, high potential near misses, and remedial and preventive activities required (for example, revised job safety analysis, new or different equipment, skills training, and so forth. 	Daily	Contractor, RAP, UNOPS and TPM
COVID-19 spread causing illnesses	<p>Visual inspection and health inspections</p> <p>Indicators:</p> <ul style="list-style-type: none"> - Number of sick workers - Number of workers adhering to wearing PPEs through visual Inspection 		Contractor, RAP, UNOPS and TPM
Risk of Manual Handling	<ul style="list-style-type: none"> - Inspection and photographic documentation <p>Maintaining a record of injuries and accidents specifying cause and location mentioning the number and type of injuries recorded</p>	Daily	Contractor, RAP, UNOPS and TPM
Worker grievances	<ul style="list-style-type: none"> - Number of grievances, details including occurrence date, grievance, type and date submitted; actions taken and dates; resolution (if any) and date; and follow-up yet to be taken grievances listed should include those received since the preceding report and those that were unresolved at the time of that report. - Number of GBV/SH cases reported that are related to workers 	Daily	Contractor, RAP, UNOPS and TPM
General Environmental Impacts			
Dust generation during rehabilitation work's excavation, backfilling, and compaction of the pavement layers.	<ul style="list-style-type: none"> - Visual observation and photographic documentation of equipment induced dust clouds during maintenance/ rehabilitation activities <p>Indicators:</p> <ul style="list-style-type: none"> - Visual presence of dust clouds 	Daily during rehabilitation works. Upon any complaint.	Contractor, RAP, UNOPS and TPM
Increased levels of noise and	<ul style="list-style-type: none"> - Site supervision/inspection and documentation to ensure compliance 	Weekly during site inspection.	Contractor, RAP, UNOPS and TPM

Impact/Issues	Measurements (incl. methods & equipment)	Frequency	Implementation responsibility
vibration due to heavy vehicles and equipment, which may be a nuisance to the community around the rehabilitation sites.	with the noise mitigation measures Indicators: - Number of complaints concerning noise	Upon any complaint.	
Air pollution due to emissions from vehicles and equipment.	- Visual observation and photographic documentation of equipment induced emissions during rehabilitation activities. Indicators: - Quantity of consumed fuel	Weekly during rehabilitation works and site inspection. Upon any complaint.	Contractor, RAP, UNOPS and TPM
Production and disposal of debris and wastes from rehabilitation.	- Inspection and photographic documentation Indicators: - Presence of waste at undesignated sites - Waste disposal receipts from the relevant landfill authorities	Daily and in weekly site inspection	Contractor, RAP, UNOPS and TPM
Leakage of vehicles lubricants and oil in worksites.	- Visual observation and photographic documentation of equipment and soil leaks (detected through changes in soil color). Indicators: - Presence of spills - Change in soil color	Monthly and Weekly during rehabilitation work and site inspection. Upon any complaint.	Contractor, RAP, UNOPS and TPM
Improper management of hazardous material and waste	- Inspection and photographic documentation. Indicators: - Presence of hazardous materials and waste at undesignated sites	Daily in site inspection	Contractor, RAP, UNOPS and TPM
Footprint management:	- Details of any work outside boundaries or major off-site impacts caused by ongoing Work to include date, location, impacts, and actions taken. - Negative impacts /damages due to work outside boundaries	Daily	Contractor, RAP, UNOPS and TPM

Impact/Issues	Measurements (incl. methods & equipment)	Frequency	Implementation responsibility
Environmental impacts (soil groundwater contamination from leaks and presence of dead animals close to project site)	<ul style="list-style-type: none"> - Inspection and photographic documentation. - Photographic detection of changes in soil color at particular sites. - Photographic detection of dead animals near the project’s activities - -Presence of waste stored near runoffs or at undesignated areas - Appropriate storage for all types of waste and hazardous chemicals, in insulated areas to avoid spillage and away from runoff areas and soil 	Daily	Contractor, RAP, UNOPS and TPM
Blockage of culverts, drainage ditches, stormwater catchment basin and channels.	<ul style="list-style-type: none"> - Site inspection and photographic documentation of cleaning activities - Indicators: - Presence of materials and wastes within culverts 	Daily	Contractor, RAP, UNOPS and TPM
Water logging due to inefficient drainage for surface runoff in some locations or shallow water.	<ul style="list-style-type: none"> - Site inspection and design review of water logging location and photographic documentation 	Daily	Contractor, RAP, UNOPS and TPM
Low aesthetic value of landscape such as accumulation of waste and debris in the rehabilitation site and damaged curbs and tiles.	<ul style="list-style-type: none"> - Site inspection and documentation of general landscape <u>Indicators:</u> - Presence of wastes at undesignated zones - Number of complaints related to aesthetic value 	Daily	Contractor, RAP, UNOPS and TPM
Disruption of the environment due to uncontrolled sources of construction materials.	<ul style="list-style-type: none"> - Site inspection and documentation of material sources, amount and storage areas 	Daily	Contractor, RAP, UNOPS and TPM
Environmental incidents and near misses	<ul style="list-style-type: none"> - Records and numbers of environmental incidents and high potential near misses and how they have been addressed, what is outstanding, and lessons learned. 	Daily	Contractor, RAP, UNOPS and TPM
Social Impact			

Impact/Issues	Measurements (incl. methods & equipment)	Frequency	Implementation responsibility
Temporary disruption of economic activities, including disruption of traffic and congestion due to road closure and detours	<ul style="list-style-type: none"> - Site inspection and documentation of community economic activities nearby site. - Visual observation and photographic documentation of traffic management plan <p>Indicators:</p> <ul style="list-style-type: none"> - Number of reported complaints - Number of accidents due to disruption of traffic; number of persons reporting economic losses due to disruption of economic activities - Number of road closures events that affect communities 	Once before commencement Once during rehabilitation Once after completion Upon any complaint.	Contractor, RAP, UNOPS and TPM
Public safety during the rehabilitation phase.	<ul style="list-style-type: none"> - Visual observation and photographic documentation of safety measures. - Visual observation for installing warning signs, barricading of working areas with safety tapes and fencing/barricades to prevent unauthorized access of public and pedestrians to the working areas. <p>Indicators:</p> <ul style="list-style-type: none"> - Number of recorded complaints - Number of reported incidents 	Daily basis during rehabilitation work and weekly during site inspection visits, On any complaint.	Contractor, RAP, UNOPS and TPM
Complaints Handling	<ul style="list-style-type: none"> - Number of registered complaints and types will be kept on site and this will feed into the GM. Details of complaints received will be incorporated into the audits as part of the monitoring process. 	Daily	Contractor, RAP, UNOPS and TPM
GBV and SEA issues	<ul style="list-style-type: none"> - Number of reported and registered cases of the SEA/SH through project GM. - Number of reported cases of contractors' noncompliance to PSEA/SH obligation on work sites. 	Daily	Contractor, RAP, UNOPS and TPM
The risk of employing children for work activities.	<ul style="list-style-type: none"> - Site inspection, checking and documentation of contractor employee records 	Weekly during rehabilitation and site inspection.	Contractor, RAP, UNOPS and TPM

Impact/Issues	Measurements (incl. methods & equipment)	Frequency	Implementation responsibility
	-		
External stakeholder grievances	<ul style="list-style-type: none"> - Number and type of grievance and date submitted, action(s) taken and date(s), resolution (if any) and date, and follow-up yet to be taken grievances listed should include those received since the preceding report and those that were unresolved at the time of that report. Grievance data should be gender disaggregated. 	Daily	Contractor, RAP, UNOPS and TPM
The risk of influx of non-local manual labor and risk of GBV and SEA.	<ul style="list-style-type: none"> - Inspection and maintaining a record of local manual labors specifying location. 	Daily	Contractor, RAP, UNOPS and TPM
Sexual harassment, abuse, gender-based violence, and discrimination	<ul style="list-style-type: none"> - Inspection - Number of GM Reports 	Daily	Contractor, RAP, UNOPS and TPM
Discrimination in employment can occur in the workplace in various ways	<ul style="list-style-type: none"> - Inspection and auditing for workers’ documents. - GM Reports regarding labor discrimination, rights and issues 	Daily	Contractor, RAP, UNOPS and TPM
External stakeholder engagement:	<ul style="list-style-type: none"> - Highlights, including formal and informal meetings, and information disclosure and dissemination to include a breakdown of women and men consulted and themes coming from various stakeholder groups, including vulnerable groups (e.g., disabled elderly, children, etc.). 	Daily	Contractor, RAP, UNOPS and TPM
Monitoring during operational phase			
Presence of failure	<ul style="list-style-type: none"> - Visual inspections on roads, culverts, electricity poles, water pipes etc. Indicator: <ul style="list-style-type: none"> - Number of GM related to the infrastructure of this project - Presence of failure in roads, electricity etc. and number of times they occurred 	Monthly	Local authority

Rehabilitation of Bajil–Al Gonaydeah–Assalif Rural Road ESMP

Impact/Issues	Measurements (incl. methods & equipment)	Frequency	Implementation responsibility
Training to local authority	- Number of trainings and attendees on maintenance provided	Prior to handing over	RAP and UNOPS

8. Public Consultation

Public consultation process takes the form of semi-structured and direct interviews with local communities and group discussions with other stakeholders in the selected road areas. They were conducted in Al Hodeidah Governorate in the subproject areas taking into consideration precautionary measures to avoid the spread of Covid-19; social distance was applied and implemented outdoors.

The consultations with beneficiaries were conducted in the subproject areas on 20 of May 2022 by RAP specialist with 15 males, and 8 females. Consultation questionnaire that is distributed/asked to the interviewees is available in annex 3 in which examples of the consultation records are available in Annex 4.

8.1 Consultation topics

The consultations with men and women covered several issues and topics including:

- Ensure communities' needs and confirm the selection priority;
- Inform local communities about the subproject and its activities to be undertaken, its timetable;
- Inform them about their rights to have a job opportunity during implementation.
- Raise their awareness about subprojects' potential risks such as safety, health, environmental, and social risks and required control measures.
- Document and address the local communities' concerns, expectations, and feedback.
- Ensure the participation of subproject beneficiaries both females and males.
- Discuss the positive impacts that the subprojects will have such as improved transportation services, accessibility and road safety;
- Discuss subprojects' possible negative impacts such as disruption of traffic and safety of workers and proposed mitigation measures and how to avoid and mitigate them.
- Inform them that the road traffic may temporarily be interrupted during implementation and how to coordinate with subproject supervisors and contractors to manage the traffic.
- Raise awareness regarding social safeguards such as GBV, SH, and abuse that may occur during the implementation and the required measures that should be taken in case of occurrence.
- Inform them about how to use the GM to give their opinions regarding social safeguard, OHS, and any complaints and concerns without fear.
- Raise awareness for the COVID-19 pandemic and the precautionary measures as well as raise awareness on other diseases, such as Cholera.

8.2 Public consultation findings and feedback

The consultation findings with interviewed people both males and females were noted as they have expressed their strong support to the subproject. They showed their interest in facilitating implementation and were eager for the subproject as it is the key priority for them. Moreover, the interviewees expressed their happiness for hearing about the subproject and how the planned activities will have positive impacts such as improving access to local services, schools and health care centers and other local services. The consulted beneficiaries have no concerns regarding land, noise, or SEA/SH. However, they have expressed some concerns about the delay of commencement and implementation in addition to the use of poor materials in rehabilitation; they also emphasize avoiding complete closure of the road during implementation and support the suggested mitigation measures to be applied section by section.

Therefore, they expressed their further needs and priorities to target other streets and roads in the governorate because the roads are much deteriorated and the most affected sector due to the current situation in the country and flood and as the roads serve all people in the city. They showed that it is an urgent need for them as it facilitates access to the public hospital and services in the governorate.

8.3 Stakeholders engagement and information disclosure

YELCP project level stakeholders' engagement and information disclosure activities took place regularly by UNOPS and RAP. The project documents including ESCP, ESMF, LMP, SEP and RF have been communicated to the relevant stakeholders and disclosed in Arabic and English on the official [UNOPS website](#).

RAP and UNOPS will ensure stakeholder engagement and information disclosure during implementation and operation with all representatives and communities affected by the subproject. Furthermore, the subproject contractor will be required to undertake a process of stakeholder engagement with representative persons and communities directly affected by the activities it undertakes, including, if necessary, the public disclosure of its C-ESMP. The subproject contractor will also maintain good relations with local communities throughout the subproject and will give these communities prior notice of plans and schedules as they might affect local people. Thus, the stakeholder engagement process and information disclosure will also be applicable in the subproject cycle.

8.4 Subproject sustainability

RAP engages various stakeholders in implementation and the consultation process continues during and after implementation. To ensure sustainability of the subproject, a community committee is planned to be formed before the commencement date which will work to ensure and confirm community participation, and help in facilitating implementation. The community committee are formed from local councils, utilities, representatives of youth and women. The key duty of such a committee is to ensure sustainability of the subproject during/ after the implementation phase. Also, coordination with Local Authorities / Councils took place to inform them on activities, the possibility of their role in facilitation during implementation. The implementation will take into consideration the climate change resilience to ensure sustainability through improving road drainage system capacity, ensuring work quality resistant to flash flood, adjustment of structural design of the pavement (flexible, semi-rigid and rigid/composite designs), etc.

8.5 Consultation during implementation

Consultations will continue during implementation with the previously consulted representative local communities to assess beneficiaries' satisfaction on implementation of mitigation measures and accommodation of all their concerns and will conduct broader consultation with more beneficiaries and wider representatives of local communities' citizens.

To ensure engagement with stakeholders during subproject implementation, the following mechanism will be adapted:

- Continue consultation with local communities by interviews and using questionnaires to assess beneficiaries' satisfaction on the implementation of activities and safeguards.
- Hold interviews during implementation of subproject in the targeted areas with both male and female citizens/ beneficiaries conducted by male and female moderators/facilitators in separate sessions.
- Utilize GIS-based portal mapping for all activities including sub projects supported to promote transparency to reach more citizens.
- Utilize citizen engagement findings conducted for YELCP which include a wide range of stakeholders.
- Explore using UNOPS' remote monitoring tools for engaging citizens in monitoring and quality assurance of subproject activities.
- Include a TPM component in reaching citizens and beneficiaries during implementation.
- Receive feedback from citizens through the RAP and UNOPS established GM in Sana'a during implementation of the subproject.

9. Grievance mechanism

UNOPS has established a GM system under the YELCP to enable beneficiaries to communicate their concerns regarding the project activities. More specifically, the GM details the procedures that communities and individuals, who believe they are adversely affected by the project or a specific subproject, can use to submit their complaints, as well as the procedures used by UNOPS and RAP to systematically register, track, investigate and promptly resolve complaints.

RAP has developed a GM for YELCP to provide multiple access points to the GM for beneficiaries to voice their concerns. Accordingly, hard copies of the translated GM records (attached in Annex 2) were provided to interviewed people and they have been informed that the GM contact information will be posted at the subproject site to ensure any grievance can be addressed in an amicable manner. During monitoring, RAP will conduct inspections for complaints. Resolving complaints at community level is always encouraged to address the problem that a person may have during the implementation and/or operation phase.

RAP shall maintain records for grievances and complaints including minutes of discussions, recommendations and resolutions made.

9.1 Complaints registration

UNOPS and RAP provide multiple access points to the GM for beneficiaries to voice their concerns. These access points will be advertised at subproject level and put on the sign boards on each subproject site, and include GM contact information including hotline, landline, mobile SMS, email and website:

GM Contact details:

Address: Haddah Street, former European Union Office Building, Sana'a
Tel: Landline +967 1 504914 and +967 1 504915, Toll Free 8000190
SMS and WhatsApp: +967 739888388
Email: grm-yemen@unops.org
Website: www.unops.org

The GM contact information will be posted in Arabic in the subproject areas and be communicated through multiple channels to ensure all groups can easily access contact information and relevant mechanisms to provide feedback.

Grievances can be brought up by affected people in case of: (i) non-fulfillment of contracts or agreements; (ii) disputes related to destruction of assets or livelihoods; (iii) disturbances caused by rehabilitation activities; (iv) concerns around safety and protection related to project's activities.

Anonymous complaints will be admissible to their attention verbally or in writing by subprojects affected communities or individuals and will relay these concerns in writing to UNOPS on a next day basis. UNOPS will determine if these concerns rise to the level of a complaint.

UNOPS will register the complaint in a dedicated log by gender, age, and location, and include a copy of the complaint and supporting documents. A draft template for registering grievances is annexed.

UNOPS will record and document complaints received in the subproject file and the subproject progress reports, including the number and type of complaints and the results of their resolution.

9.2 Tracking, investigating and resolving complaints

The GM log that is maintained by UNOPS will track the date the complaint was received, date responded to, the type of response, and if the complaint was resolved to the satisfaction of the plaintiff.

More specifically, the GM focal point will register complaints; Inform the complainant if the complaint is accepted or rejected within 3 days from receiving the complaint; as well as to work with engineers, local partners, and contractors to resolve the complaint within 21days of its submission.

The ESSO will coordinate with local partners, local field staff and local government officials to ensure prompt follow up action in response to each complaint.

9.3 Grievance categories

The grievance could be among but not limited to the following categories:

- Access to project benefits (e.g., no or insufficient jobs created for local communities);
- Non-equal distribution of project services among target beneficiaries;
- Disputes (e.g. matters raised by/related to beneficiaries.
- Disturbance (e.g. noise, traffic road access and public safety etc.).
- GBV/SH grievance
- Internal grievance (workers grievance)

9.4 Steps to handle GM

- Publicizing: stakeholder’s consultation, printed materials;
- Receiving and registering complaints: staff at local and central level who will be responsible for receiving, registering and tracking complaints;
- Acknowledging: The GM staff (team) acknowledges receipt of the complaint within 2-3 working days. Inform the complainant on the eligibility of his/her complaint;
- Anonymous complaints: To be studied as well;
- Reviewing and investigating, collecting, reviewing and analyzing related documents;
- Conducting interviews of the people involved, officers and staff;
- Analyzing the related national legislations & regulations, World Bank Policies & Guidelines and UNOPS standards;
- Summarizing the facts and findings;
- Developing resolution options: based on the collected evidence, the GM staff (team) will draw conclusions, make recommendations for solutions, and present it to the complainant;
- If the solution is not accepted, the complaint will be presented to the Program Manager as a second level to appeal who can make the resolution and/or can delegate an arbitrary to investigate the investigate on the complaint and propose recommendations for resolution; the complainant can still initiate legal process for his complaint if not satisfied with the proposed resolution.
- Implementing resolution: If the solution is accepted, then it will be implemented;
- Monitoring and closing: the complaint should be monitored for a reasonable period of time to make sure that the complainant does not express additional concerns, and then the complaint could be closed.
- Reporting (recording): prepare concise summary reports of the complaints received, with the resolutions taken and status of resolutions implementation, and fill in the database with detailed records. Annex 2 summarizes the complaints management review process.

10. Reporting of ESMP

The RAP ESSO will report to UNOPS on a monthly basis the implementation of the ESMP and UNOPS will report the ESMP implementation to the WB. There will also be irregular reports based on the situation and updates. The RAP Supervision Consultant assigned as a worksite resident engineer is in charge of all construction activities. The environmental specialist will make monthly visits to each subproject to ensure that all mitigation measures are in place. As guided in this ESMP as well as Annex 1, the contractors shall monitor, keep records and report on the environmental and social issues : safety, environmental incidents and near misses, major works, ESHS requirements, ESHS

Rehabilitation of Bajil–Al Gonaydeah–Assalif Rural Road ESMP

inspections and audits: workers, training on ESHS issues, footprint management, external stakeholder engagement, details of any security risks, worker grievances, external stakeholder grievances, major changes to Contractors environmental and social practices, deficiency and performance management.

The following table provides an indicative reporting plan.

Table 11 Reporting plan

What	How	Who	When
Compliance level to the ESMP including environmental and social issues, OHS, GM, etc.	Based on monitoring and inspections, log, the consultant reports, GM log	ESSO	Monthly from RAP to UNOPS and quarterly from UNOPS to WB.
Compliance level to the ESMP and environmental and social issues: safety, environmental incidents and near misses, major works, ESHS requirements, ESHS inspections and audits: workers, training on ESHS issues, footprint management, external stakeholder engagement, details of any security risks, worker grievances, external stakeholder grievances, major changes to Contractors environmental and social practices, deficiency and performance management.	based on monitoring, inspection, records, logs, and contractor reports.	RAP Supervision consultant	Monthly and based on cases
Environmental and social issues: safety, environmental incidents and near misses, major works, ESHS requirements, ESHS inspections and audits: workers, training on ESHS issues, footprint management, external stakeholder engagement, details of any security risks, worker grievances, external stakeholder grievances, major changes to Contractors environmental and social practices, deficiency and performance management.	Contractor ESSO based on monitoring, inspection, records, logs.	Contractor	Monthly and based on cases

Annex 1 Environmental and social requirements for contractors

Contractors shall meet the following Environmental, Health, Safety and Social (including labor) requirements – thereafter called ESHS requirements⁸.

The ESHS requirements include the following sections

1. Contractor Environmental and Social Management Plan (C-ESMP)
2. ESHS Training
3. Construction Site Management
4. Occupational Health and Safety (OHS)
5. Road safety and Traffic Safety
6. Emergency Preparedness and Response
7. Stakeholder Engagement
8. Labor Management including Code of Conduct
9. Contractor Environmental and Social Reporting

1. General Provision

Contractor Environmental and Social Management Plan (C-ESMP)

- Contractor Environmental and Social Management Plan (C-ESMP) shall be prepared and submitted to RAP/ UNOPS for approval
- Include in the C-ESMP a detailed explanation of how the contractor's performance will meet the ESHS requirements
- Ensure that sufficient funds are budgeted to meet the ESHS requirements, and that sufficient capacity is in place to oversee, monitor and report on C-ESMP performance.
- Put in place controls and procedures to manage their ESHS performance.
- Get prior written approval from RAP Engineers before starting construction or rehabilitation activities.

2. ESHS Training

- Determine ESHS training needs in collaboration with RAP/ UNOPS
- Maintain records of all ESHS training, orientation, and induction.
- Ensure, through appropriate contract specifications and monitoring that service providers, as well as contracted and subcontracted labor, are trained adequately before assignments begin.
- Demonstrate that its employees are competent to carry out their activities and duties safely. For this purpose, the Contractor shall issue a Competence Certificate for every person working on site (relative to trade and aspect of work assignment) that specifies which tasks can be undertaken by which key personnel.
- Training should include occupational health and safety measures, GBV HS and social health and safety measures, Environmental health and safety measures, waste management and hazardous materials management.

Orientation Training

- Provide ESHS orientation training to all employees, including management, supervisors, and workers, as well as to subcontractors, so that they are apprised of the basic site rules of work at/on the site and of personal protection and preventing injury to fellow employees.
- Training should consist of basic hazard awareness, site-specific hazards, safe work practices, and emergency procedures for fire, evacuation, and natural disaster, as appropriate. Any site-specific hazard or color coding in use should be thoroughly reviewed as part of

⁸ The ESHS requirements build on the General EHS Guidelines of the World Bank Group, but also take into account other World Bank guidelines, and good practice notes

orientation training.

Visitor Orientation

- Establish an orientation program for visitors, including vendors that could access areas where hazardous conditions or substances may be present.
- Visitors shall not enter hazard areas unescorted.
- Ensure that visitors shall always be accompanied by an authorized member of the contractor, or a representative of UNOPS or RAP, who has successfully fulfilled the ESHS orientation training, and who is familiar with the project site construction hazards, layout, and restricted working areas.

New Task Employee and Contractor Training

- Ensure that all workers and subcontractors, prior to commencement of new assignments, have received adequate training and information enabling them to understand work hazards and to protect their health from hazardous ambient factors that may be present. The training should adequately cover the step-by-step process that is needed for Project activities to be undertaken safely, with minimum harm to the environment, including:
 - Knowledge of materials, equipment, and tools
 - Known hazards in the operations and how they are controlled
 - Potential risks to health
 - Precautions to prevent exposure
 - Hygiene requirements
 - Wearing and use of protective equipment and clothing
 - Appropriate response to operation extremes, incidents and accidents

3. Construction Site Management

Vegetation

- Prevent any unnecessary destruction, scarring, or defacing of the natural surroundings in the vicinity of the construction site
- Protect all trees and vegetation from damage by construction operations and equipment, except where clearing is required for permanent works, approved construction roads, or excavation operations
- Revegetate damaged areas on completion of the Works, and for areas that cannot be re-vegetated, scarifying the work area to a condition that will facilitate natural re-vegetation, provide for proper drainage, and prevent erosion
- Use, as much as possible, local species for replanting and species that are not listed as a noxious weed
- Repair, replant, reseed or otherwise correct, as directed by UNOPS or RAP, and at the Contractor's own expense, all unnecessary destruction, scarring, damage, or defacing of the landscape resulting from the Contractors operations
- Transport labor and equipment in a manner to avoid as much as possible damage to grazing land, crops, and property

Protection of the Existing Installations

- Safeguard all existing buildings, structures, works, pipes, cables, sewers, or other services or installations from harm, disturbance or deterioration during construction activities
- Coordinate with local authorities to identify existing infrastructure that might not be visible
- Repair any damage caused by the Contractor's activities, in coordination with concerned authorities.
- Take all reasonable precautions to prevent or reduce any disturbance or inconvenience to the owners, tenants or occupiers of properties to the construction activities, and more generally

- to the public
- Maintain safe access to public and private properties that might be affected by construction activities. If necessary, provide acceptable alternative means of passage or access to the satisfaction of the persons affected.
- Avoid working during night hours

Waste from Construction Activities

- Collect and properly store and manage all solid wastes and hazardous wastes (separated hazardous wastes from solid wastes) resulting from the construction activities, including construction debris and spoils, to prevent the contamination of soil and groundwater. In case chemicals are present they should be stored and disposed according to their Material Safety Data Sheets (MSDSs)
- Remove unneeded excavation material from construction sites as soon as possible
- Agree with relevant municipalities about construction waste disposal
- Carefully select waste disposal sites, to be approved by UNOPS or RAP.
- Minimize littering of roads by ensuring that vehicles are licensed and loaded in such a manner as to prevent falling off or spilling of construction materials, and by sheeting the sides and tops of all vehicles carrying mud, sand, other materials or debris
- Transfer construction waste to assigned places in the selected waste disposal sites with documented confirmation.
- Properly dispose of solid waste and debris and hazardous waste (separately) at designated permitted sites, waste disposal sites allocated by the local authorities, and obtain a receipt of waste from the authorized landfill authority.

Air Quality

The most common pollutant involved in fugitive emissions is dust or particulate matter (PM) that is released during the transport and open storage of solid materials, and from exposed soil surfaces, including unpaved roads. Accordingly, the Contractor shall:

- Use dust control methods, such as covers, water suppression, or increased moisture content for open materials storage piles, or controls, including air extraction and treatment through a baghouse or cyclone for material handling sources, such as conveyors and bins;
- Use water suppression for control of loose materials on paved or unpaved road surfaces. Oil and oil by-products are not a recommended method to control road dust.
- Use wheel washes at quarries, ready-mix plants, construction sites, and other facilities to prevent track-out of mud, dust and dirt on to public roads.
- Regularly clean road surfaces within the construction sites to remove accumulated fine material, and regularly clean transportation vehicles.
- Cover open bodied trucks handling sand, gravel or earth.
- Minimize smoke from diesel engines by regular and proper maintenance, in particular by ensuring that the engine, injection system and air cleaners are in good condition.

Hazardous and Toxic Materials

Toxic and deleterious wastes resulting from the Project Company's activities require special attention in order to forestall their introduction into the natural environment which could result in harm to people, aquatic life or natural growth of the area. The Contractor shall take precautions relative to the conditions specified herein.

- Train workers regarding the handling of hazardous materials
- Store hazardous materials as per the statutory provisions of the Manufactures, Storage and Import of Hazardous Chemicals Rules (1989), under the Environment (Protection) Act, 1986.
- Provide adequate secondary containment for fuel storage tanks and for the temporary storage of other fluids such as lubricating oils and hydraulic fluids,

- Use impervious surfaces for refueling areas and other fluid transfer areas
- Train workers on the correct transfer and handling of fuels and chemicals and the response to spills
- Provide portable spill containment and cleanup equipment on site and training in the equipment deployment
- Deposit or discharge toxic liquids, chemicals, fuels, lubricants and bitumen into containers for salvage or subsequent removal to off-site locations.
- Treat hazardous waste separately from other waste
- Avoid the storage or handling of toxic liquid adjacent to or draining into drainage facilities.
- Keep absorbent materials or compounds on Site in sufficient quantities corresponding to the extent of possible spills.

Borrow Pits and Quarries

Materials required for site fill, backfill or the construction of permanent works that are not available from the surface will be obtained from borrow areas and quarries that the Contractor will identify, subject to approval by the RAP following the applicable regulations..

The Contractor shall adhere to the following standards when sitting, developing, operating, and reinstating borrow pits and quarries:

- Obtain all necessary permits for borrow pits and quarry operations.
- Locate quarry sites as far away from settlements as possible. Quarry operations will produce noise and dust that will impact on nearby inhabitants even if controls are imposed.
- Fence and secure quarry sites. Steep quarry faces are a hazard to people and livestock.
- Locate borrow pits and quarries at least 100 m from watercourses or human habitations.
- Avoid all use of explosives for stones quarrying
- Locate borrow pits on land that is not used for cultivation and is not wooded.
- Avoid areas of local historical or cultural interest and locate pits more than 25 m of grave sites.
- Hide, to the extent possible, pits from the road. Quarries and borrow pits should be designed to minimize visible scarring of the landscape.
- Develop and implement plan to reinstate borrow pits and quarry sites as closely as possible to their original state

Area Signage

- Appropriately mark hazardous areas.
- Install warning signs
- Ensure that signage is in accordance with international standards and is well known to, and easily understood by workers, visitors and the general public as appropriate.
- Demarcate work sites with safety tape, fencing or barricades, as appropriate, to prevent unauthorized access to the construction sites
- Safeguard public safety by covering holes and by installing guardrails along temporary pathways.

Chance Find Procedures

Actions to be taken if previously unknown cultural heritage is encountered, including:

- Train construction crews and supervisors to spot potential archaeological finds
- Keep records and ensure expert verification
- Provide chain of custody instructions for movable finds
- notify the Department of Archaeology at the Ministry of Culture or a local university, for quick assessment and action
- Define clear criteria for potential temporary work stoppages required for rapid disposition of issues related to the finds.
- Avoid indirect damage to existing cultural heritage, such as affecting masonry through

vibration

Decommissioning of Worksites and Plant

- Clear construction sites of any equipment or waste, and ensuring that the sites are free from contamination.
- Dispose of or recycle any equipment or waste in an appropriate and environmentally sound manner.
- Hand construction sites over to the original owners, taking into account his/her wishes and national legislation.

4. Health and Safety

Severe Weather and Facility Shutdown

- Design and build workplace structures to withstand the expected elements for the region and designate an area designated for safe refuge, if appropriate.
- Develop Standard Operating Procedures (SOPs) for project or process shut-down, including an evacuation plan.

Lavatories and Showers

- Provide adequate lavatory facilities (toilets and washing areas) for the number of people expected to work at the construction sites, and make allowances for segregated facilities, or for indicating whether the toilet facility is “In Use” or “Vacant”.
- Provide toilet facilities with adequate supplies of hot and cold running water, soap, and hand drying devices.
- Where workers may be exposed to substances poisonous by ingestion and skin contamination may occur, provide facilities for showering and changing into and out of street and work clothes.

Potable Water Supply

- Provide adequate supplies of potable drinking water from a fountain with an upward jet or with a sanitary means of collecting the water for the purposes of drinking
- Ensure that water supplied to areas of food preparation or for the purpose of personal hygiene (washing or bathing) meets drinking water quality standards

Clean Eating Area

- Where there is potential for exposure to substances poisonous by ingestion, make suitable arrangements to provide clean eating areas where workers are not exposed to the hazardous or noxious substances.

Personal Protective Equipment (PPE)

- Identify and provide at no cost appropriate PPE to workers, the workers of subcontractors, as well as to visitors, which gives adequate protection without incurring unnecessary inconvenience to the individual
- Ensure that the use of PPE is compulsory.
- Provide sufficient training in the use, storage and maintenance of PPE to its workers and workers of its subcontractors.
- Properly maintain PPE, including cleaning when dirty and replacement when damaged or worn out;
- Determine requirements for standard and/or task-specific PPE based on of Job specific Safety Analysis (JSA);
- Consider the use of PPE as a last resort when it comes to hazard control and prevention, and always refer to the hierarchy of hazard controls when planning a safety process.

Noise

Institute appropriate measures to reduce the exposure of workers to construction noise, including but not limited to:

- Avoid exposure to a noise level greater than 85 dB(A) for a duration of more than 8 hours per day without hearing protection. In addition, no unprotected ear should be exposed to a peak sound pressure level (instantaneous) of more than 140 dB(C).
- The use of hearing protection should be enforced actively when the equivalent sound level over 8 hours reaches 85 dB(A), the peak sound levels reach 140 dB(C), or the average maximum sound level reaches 110 dB(A).
- Provide hearing protective devices capable of reducing sound levels at the ear to at most 85 dB(A).
- Reduce the “allowed” exposure period or duration by 50 percent for every 3 dB(A) increase in excess of 85 dB(A).
- Perform periodic medical hearing checks on workers exposed to high noise levels.
- Rotate staff to limit individual exposure to high levels.
- Install practical acoustical attenuation on construction equipment, such as mufflers.
- Use silenced air compressors and power generators
- Keep all machinery in good condition
- Install exhaust silencing equipment on bulldozers, compactors, crane, dump trucks, excavators, graders, loaders, scrapers and shovels.
- Post signs in all areas where the sound pressure level exceeds 85 dB(A).
- Shut down equipment when not directly in use
- Provide advance notice to occupants if an activity involving high level impact noise is in close proximity to buildings.

Slip, trip and Falls

Slips and falls on the same elevation associated with poor housekeeping, such as excessive waste debris, loose construction materials, liquid spills, and uncontrolled use of electrical cords and ropes on the ground, are also among the most frequent cause of lost time accidents at construction and decommissioning sites.

To prevent slips and falls from, or on, the same elevation, the Contractor shall

- Implementing good house-keeping practices, such as the sorting and placing loose construction materials or demolition debris in established areas away from foot paths
- Clean up excessive waste debris and liquid spills regularly
- Locate electrical cords and ropes in common areas and marked corridors
- Ensure that workers use slip retardant footwear

Working at Heights

The contractor shall implement fall prevention and protection measures whenever a worker is exposed to the hazard of falling more than two meters, or through an opening in a work surface. The Contractor shall:

- Install guardrails with mid-rails and toe boards at the edge of any fall hazard area
- Train workers on the proper use of ladders and scaffolds
- Install fall prevention devices, including safety belt and lanyard travel limiting devices to prevent access to fall hazard area, or fall protection devices such as full body harnesses used in conjunction with shock absorbing lanyards or self retracting inertial fall arrest devices attached to fixed anchor point or horizontal life-lines
- Train workers in the use, serviceability, and integrity of the necessary PPE
- Include rescue and recovery plans, and equipment to respond to workers after an arrested fall

Struck By Objects

The Contractor shall:

- Use a designated and restricted waste drop or discharge zones, and/or a chute for safe movement of wastes from upper to lower levels
- Conduct sawing, cutting, grinding, sanding, chipping or chiseling with proper guards and anchoring as applicable
- Maintain clear traffic ways to avoid driving of heavy equipment over loose scrap
- Use temporary fall protection measures in scaffolds and out edges of elevated work surfaces, such as handrails and toe boards to prevent materials from being dislodged
- As necessary, require workers to wear appropriate PPE, such as safety glasses with side shields, face shields, hard hats, and safety shoes

First Aid and Accidents

- Ensure that qualified first-aid by qualified personnel is always available. Appropriately equipped first-aid stations should be easily accessible throughout the place of work.
- Provide workers with rescue and first-aid duties with dedicated training so as not to inadvertently aggravate exposures and health hazards to themselves or their co-workers. Training would include the risks of becoming infected with blood-borne pathogens through contact with bodily fluids and tissue.
- Provide eye-wash stations and/or emergency showers close to all workstations where immediate flushing with water is the recommended first-aid response.
- Provide dedicated and appropriately equipped first-aid room(s) where the scale of work or the type of activity being carried out so requires.
- Equip first aid stations and rooms with gloves, gowns, and masks for protection against direct contact with blood and other body fluids.
- Make widely available written emergency procedures for dealing with cases of trauma or serious illness, including procedures for transferring patient care to an appropriate medical facility.
- Immediately report all accidental occurrences with serious accident potential such as major equipment failures, contact with high-voltage lines, exposure to hazardous materials, slides, or cave-ins to UNOPS and RAP.
- Immediately investigate any serious or fatal injury or disease caused by the progress of work by the Contractor, and submit a comprehensive report to UNOPS and RAP.

Communicable Diseases

Sexually-transmitted diseases (STDs), such as HIV/AIDS, are the communicable diseases of most concern because of labor mobility. Recognizing that no single measure is likely to be effective in the long term, the Contractor shall implement a combination of behavioral and environmental modifications to mitigate communicable diseases:

- Conduct Information, Education and Consultation Communication (IEC) campaigns, at least every other month, addressed to all construction site staff (including all the Contractor's employees, all subcontractors of any tier, consultants' employees working on the site, and truck drivers and crew making deliveries to the site for Works and Services executed under the Contract, concerning the risks, dangers and impact, and appropriate avoidance behavior of communicable diseases.
- Provide for active screening, diagnosis, counseling and referral of workers to a dedicated national STD and HIV/AIDS program, (unless otherwise agreed) for all Site staff and labor.
- Provide male or female condoms to all Site staff and workers, as appropriate.
- Provide treatment through standard case management in on-site or community health care facilities.
- Ensure ready access to medical treatment, confidentiality and appropriate care, particularly with respect to migrant workers.
- Promote collaboration with local authorities to enhance access of workers' families and the community to public health services and ensure the immunization of workers against common and locally prevalent diseases.

- Provide basic education on the conditions that allow the spread of other diseases such as COVID-19, Lassa Fever, Cholera and Ebola. The training should cover sanitary hygiene education.
- Prevent illness in immediate local communities by:
 - Implementing an information strategy to reinforce person-to-person counseling addressing systemic factors that can influence individual behavior as well as promoting individual protection, and protecting others from infection, by encouraging condom use
 - Training health workers in disease treatment
 - Conducting immunization programs for workers in local communities to improve health and guard against infection
 - Providing health services
 - Contracting an HIV service provider to be available on-site

COVID-19

In the context of the COVID-19 pandemic, Contractors shall develop and implement measures to prevent or minimize an outbreak of COVID-19, and develop procedures indicating what should be done if a worker gets sick. The measures shall include:

- Assessing the characteristics of the workforce, including those with underlying health issues or who may be otherwise at risk
- Confirming that workers are fit for work, including temperature testing and refusing entry to sick workers
- Considering ways to minimize entry/exit to site or the workplace, and limiting contact between workers and the community/general public
- Training workers on hygiene and other preventative measures, and implementing a communication strategy for regular updates on COVID-19 related issues and the status of affected workers
- Treating workers who are or should be self-isolating and/or are displaying symptoms
- Assessing risks to continuity of supplies of medicine, water, fuel, food and PPE, taking into account international, national and local supply chains
- Reducing, storing and disposing of medical waste
- Adjusting work practices, to reduce the number of workers and increase social distancing
- Expanding health facilities on-site compared to usual levels, developing relationships with local health care facilities and organize for the treatment of sick workers
- Building worker accommodations further apart, or having one worker accommodation in a more isolated area, which may be easily converted to quarantine and treatment facilities, if needed
- Establishing a procedure to follow if a worker becomes sick (following WHO guidelines)
- Implementing a communication strategy with the community, community leaders and local government in relation to COVID-19 issues on the site.

5. Road safety and Traffic Safety

The Contractor shall ensure traffic safety by all project personnel during displacement to and from the workplace, and during the operation of project equipment on private or public roads. The Contractor shall adopt best transport safety practices across all aspects of project operations with the goal of preventing traffic accidents and minimizing injuries suffered by project personnel and the public, including:

- Emphasize safety aspects among drivers
- Improve driving skills and requiring licensing of drivers
- Institute defensive driving training for all drivers prior to starting their job
- Adopt limits for trip duration and arranging driver rosters to avoid overtiredness
- Avoid dangerous routes and times of day to reduce the risk of accidents

- Use speed control devices (governors) on trucks, and remote monitoring of driver actions
- Require that drivers and co-passengers wear seatbelts, and duly sanction defaulters.
- Regularly maintain vehicles and use manufacturer approved parts to minimize potentially serious accidents caused by equipment malfunction or premature failure.

Where the project may contribute to significant changes in traffic along existing roads the Contractor shall:

- Commence activities that affect public motorways and highways, only after all traffic safety measures necessitated by the activities are fully operational.
- Arrange diversions for providing alternative routes for transport and/or pedestrians
- Minimize pedestrian interaction with construction vehicles, particularly at crossing points to schools, markets, and any animal crossing points of significance, through appropriate signage, engineered footpaths or traffic slowing devices.
- Organize meaningful road accident awareness events at all roadside schools and communities within 150 meters of the road centerline, covering safe road crossing, road accident hazards from weather conditions and vehicle roadworthiness, overloading and driver alertness, dangers posed by parked and broken-down vehicles, etc.
- Collaborate with local communities and responsible authorities to improve signage, visibility and overall safety of roads, particularly along stretches located near schools or other locations where children may be present.
- Collaborate with local communities on education about traffic and pedestrian safety (e.g. school education campaigns).
- Coordinate with emergency responders to ensure that appropriate first aid is provided to all affected persons in the event of accidents.
- Use locally sourced materials, whenever possible, to minimize transport distances, and locate associated facilities close to project sites.
- Employ safe traffic control measures, including road signs, traffic cones, removable barriers, and flag persons to warn of dangerous conditions.

6. Emergencies

- Establish and maintain an emergency preparedness and response system, in collaboration with appropriate and relevant third parties including to cover: (i) the contingencies that could affect personnel and facilities of the project to be financed; (ii) the need to protect the health and safety of project workers; (iii) the need to protect the health and safety of the Affected Communities. The emergency preparedness and response system shall include:
 - Identification of the emergency scenarios
 - Specific emergency response procedures
 - Training of emergency response teams
 - Emergency contacts and communication systems/protocols (including communication with Affected Communities when necessary)
 - Procedures for interaction with government authorities (emergency, health, environmental authorities)
 - Permanently stationed emergency equipment and facilities (e.g., first aid stations, firefighting equipment, spill response equipment, personal protection equipment for the emergency response teams)
 - Protocols for the use of the emergency equipment and facilities
 - Clear identification of evacuation routes and muster points
 - Emergency drills and their periodicity based on assigned emergency levels or tiers
 - Decontamination procedures and means to proceed with urgent remedial measures to contain, limit and reduce pollution within the physical boundaries of the project property and assets to the extent possible.

7. Stakeholder Engagement

The contractor will be required to undertake a process of stakeholder engagement with representative persons and communities directly affected by the activities it undertakes, including if necessary, the public disclosure of its C-ESMP. The contractor shall also maintain throughout the Project good relations with local communities and will give these communities prior notice of plans and schedules as they might affect local people.

8. Labor Force Management

The contractor shall

- Provide opportunities for workers to regularly return to their families
- Provide opportunities for workers to take advantage of entertainment opportunities away from rural host communities
- Pay adequate salaries for workers to reduce incentive for theft
- Pay salaries into workers' bank accounts rather than in cash
- Get an appropriate mix of locally and non- locally procured goods to allow local project benefits while reducing risk of crowding out of and price hikes for local consumers
- Establish substance abuse prevention and management programs
- Hire workers through recruitment offices, and avoid hiring "at the gate" to discourage spontaneous influx of job seekers
- Identify authorized water supply source and prohibiting use from other community sources;
- Put in place measures to reduce water and electricity consumption;
- Employ locals to the extent possible;
- Develop and adopt a Gender Action Plan to promote the transfer of construction skills to local women, to facilitate their employment at the Project site, including training and recruitment targets.

Labor Conditions

- Implement the measures and commitments defined in the Labor Management Procedures. A copy of the LMP can be found in the Project ESMF
- Provide all workers with terms and conditions that comply with Yemeni Labor Legislation, most particularly Decree 5/1995) and applicable International Labor Organization conventions on workplace conditions.

Insurance

- Provide insurance for call employees involved in onsite activities, as indicated by Yemen's Labor Law
- Compensate any employee for death or injury, except to the extent that liability arises.

Grievance Mechanism for Workers

The Contractor will put in place a Grievance Mechanism for its workers and the workers of its subcontractors that is proportionate to its workforce. The GM shall be distinct from the Project level Grievance Mechanism for affected individuals and communities, and shall adhere to the following principles:

- Provision of information. All workers should be informed about the grievance mechanism at the time they are hired, and details about how it operates should be easily available, for example, included in worker documentation or on notice boards.
- Transparency of the process. Workers must know to whom they can turn in the event of a grievance and the support and sources of advice that are available to them. All line and senior managers must be familiar with their organization's grievance procedure.
- Keeping it up to date. The process should be regularly reviewed and kept up to date, for example, by referencing any new statutory guidelines, changes in contracts or representation.
- Confidentiality. The process should ensure that a complaint is dealt with confidentiality.

While procedures may specify that complaints should first be made to the workers' line manager, there should also be the option of raising a grievance first with an alternative manager, for example, a human resource (personnel) manager.

- Non-retribution. Procedures should guarantee that any worker raising a complaint will not be subject to any reprisal.
- Reasonable timescales. Procedures should allow for time to investigate grievances fully, but should aim for swift resolutions. The longer a grievance is allowed to continue, the harder it can be for both sides to get back to normal afterwards. Time limits should be set
- for each stage of the process, for example, a maximum time between a grievance being raised and the setting up of a meeting to investigate it.
- Right of appeal. A worker should have the right to appeal to the UNOPS or national courts if he or she is not happy with the initial finding.
- Right to be accompanied. In any meetings or hearings, the worker should have the right to be accompanied by a colleague, friend or union representative.
- Keeping records. Written records should be kept at all stages. The initial complaint should be in writing if possible, along with the response, notes of any meetings and the findings and the reasons for the findings. Any records on SEA shall be registered separately and under the strictest confidentiality.
- Relationship with collective agreements. Grievance procedures should be consistent with any collective agreements.
- Relationship with regulation. Grievance processes should be compliant with the national employment code.

Protection from Sexual Exploitation and Abuse

- Provide repeated training and awareness raising to the workforce about refraining from unacceptable conduct toward local community members, specifically women
- Inform workers about national laws that make sexual harassment and gender-based violence a punishable offence which is prosecuted
- Prohibit its employees from exchanging any money, goods, services, or other things of value, for sexual favors or activities, or from engaging any sexual activities that are exploitive or degrading to any person.
- Develop a system to capture gender-based violence, sexual exploitation and workplace sexual harassment related complaints/issues.
- Adopt a policy to cooperate with law enforcement agencies in investigating complaints about gender-based violence.

Protection from Child Labor

- Verify that workers are older than 18 when hiring
- Exclude all persons under the age of 18.
- Review and retain copies of verifiable documentation concerning the age of workers

Code of Conduct

- Contractors shall ensure that all employees, including those of subcontractors, are informed about and sign Code of Conduct. Code of Conduct sample is available below in which the contractor shall adopt and include all provisions in their own Code of Conduct:

CODE OF CONDUCT FOR CONTRACTOR'S PERSONNEL

We the Contractor [enter name of Contractor] have signed a contract with UNOPS for [enter description of the activities]. These activities will be carried out at [enter the Site and other locations where the activities will be carried out]. Our contract requires us to implement measures to address environmental and social risks related to the activities, including the risks of sexual exploitation and assault and gender-based violence.

This Code of Conduct is part of our measures to deal with environmental and social risks related to

the activities. It applies to all our staff, including laborers and other employees at the at all the places where the activities are being carried out. It also applies to the personnel of every subcontractor and any other personnel assisting us in the execution of the activities. All such persons are referred to as “Contractor’s Personnel” and are subject to this Code of Conduct.

This Code of Conduct identifies the behavior that we require from all Contractor’s Personnel.

Our workplace is an environment where unsafe, offensive, abusive or violent behavior will not be tolerated and where all persons should feel comfortable raising issues or concerns without fear of retaliation.

Required Conduct

Contractor’s Personnel shall:

1. carry out his/her duties competently and diligently;
2. comply with this Code of Conduct and all applicable laws, regulations and other requirements, including requirements to protect the health, safety and well-being of other Contractor’s Personnel and any other person;
3. maintain a safe working environment including by:
4. ensuring that workplaces, machinery, equipment and processes under each person’s control are safe and without risk to health;
5. wearing required personal protective equipment;
6. using appropriate measures relating to chemical, physical and biological substances and agents; and
7. following applicable emergency operating procedures.
8. report work situations that he/she believes are not safe or healthy and remove himself/herself from a work situation which he/she reasonably believes presents an imminent and serious danger to his/her life or health;
9. treat other people with respect, and not discriminate against specific groups such as women, people with disabilities, migrant workers or children;
10. not engage in any form of sexual harassment including unwelcome sexual advances, requests for sexual favors, and other unwanted verbal or physical conduct of a sexual nature with other Contractor’s or Employer’s Personnel;
11. not engage in Sexual Exploitation, which means any actual or attempted abuse of position of vulnerability, differential power or trust, for sexual purposes, including, but not limited to, profiting monetarily, socially or politically from the sexual exploitation of another. In Bank financed projects, sexual exploitation occurs when access to or benefit from Bank financed Goods, Works, Consulting or Non-consulting services is used to extract sexual gain;
12. not engage in Sexual Assault, which means sexual activity with another person who does not consent. It is a violation of bodily integrity and sexual autonomy and is broader than narrower conceptions of “rape”, especially because (a) it may be committed by other means than force or violence, and (b) it does not necessarily entail penetration.
13. not engage in any form of sexual activity with individuals under the age of 18, except in case of pre-existing marriage;
14. complete relevant training courses that will be provided related to the environmental and social aspects of the Contract, including on health and safety matters, and Sexual Exploitation and Assault (SEA);
15. report violations of this Code of Conduct; and
16. Not retaliate against any person who reports violations of this Code of Conduct,

whether to us or the Employer, or who makes use of the Grievance mechanism for Contractor’s Personnel or the project’s Grievance Mechanism.

Raising Concerns

If any person observes behavior that he/she believes may represent a violation of this Code of Conduct, or that otherwise concerns him/her, he/she should raise the issue promptly. This can be done in either of the following ways:

1. Contacting the Individual designated by the Contractor [enter name of Contact]
2. In writing at this address []
3. By telephone at []
4. In person at []
5. Calling [] to reach the Contractor’s hotline and leave a message (if available)

The person’s identity will be kept confidential, unless reporting of allegations is mandated by the country law. Anonymous complaints or allegations may also be submitted and will be given all due and appropriate consideration. We take seriously all reports of possible misconduct and will investigate and take appropriate action. We will provide warm referrals to service providers that may help support the person who experienced the alleged incident, as appropriate.

There will be no retaliation against any person who raises a concern in good faith about any behavior prohibited by this Code of Conduct. Such retaliation would be a violation of this Code of Conduct.

Consequences of Violating the Code of Conduct

Any violation of this Code of Conduct by Contractor’s Personnel may result in serious consequences, up to and including termination and possible referral to legal authorities.

For Contractor’s Personnel

I have received a copy of this Code of Conduct written in a language that I comprehend. I understand that if I have any questions about this Code of Conduct, I can contact [enter name of Contractor’s contact person with relevant experience in handling gender-based violence] requesting an explanation.

Name of Contractor’s Personnel: [insert name]
 Signature: _____
 Date: (day month year): _____
 Countersignature of authorized representative of the Contractor:
 Signature: _____
 Date: (day month year): _____

9. Contractor Environmental and Social Reporting

The Contractor shall report work-related incidents, accidents to UNOPS within 24 hours of their occurrence.

Contractors shall monitor, keep records and report on the following environmental and social issues:

Safety: hours worked, lost time injury (LTI), lost workdays, recordable incidents and corresponding Root Cause Analysis (lost time incidents, medical treatment cases), first aid cases, high potential near misses, and remedial and preventive activities required (for example, revised job safety analysis, new or different equipment, skills training, and so forth).

Environmental incidents and near misses: environmental incidents and high potential near misses and how they have been addressed, what is outstanding, and lessons learned.

Major works: those undertaken and completed, progress against project schedule, and key work fronts (work areas).

ESHS requirements: noncompliance incidents with permits and national law (legal noncompliance), project commitments, or other ESHS requirements.

ESHS inspections and audits: by Project Company, Independent Engineer, UNOPS and its implementing partners, or others—to include date, inspector or auditor name, sites visited and records reviewed, major findings, and actions taken.

Workers: list of workers at each site, confirmation of ESHS training, indication of origin (expatriate, local, nonlocal nationals), gender, age with evidence that no child labor is involved, and skill level (unskilled, skilled, supervisory, professional, management).

Training on ESHS issues: including dates, number of trainees, and topics.

Footprint management: details of any work outside boundaries or major off-site impacts caused by ongoing construction—to include date, location, impacts, and actions taken.

External stakeholder engagement: highlights, including formal and informal meetings, and information disclosure and dissemination—to include a breakdown of women and men consulted and themes coming from various stakeholder groups, including vulnerable groups (e.g., disabled, elderly, children, etc.).

Details of any security risks: details of risks the Project Company may be exposed to while performing its work—the threats may come from third parties external to the project.

Worker grievances: details including occurrence date, grievance, and date submitted; actions taken and dates; resolution (if any) and date; and follow-up yet to be taken—grievances listed should include those received since the preceding report and those that were unresolved at the time of that report.

Stakeholders grievances: grievance and date submitted, action(s) taken and date(s), resolution (if any) and date, and follow-up yet to be taken—grievances listed should include those received since the preceding report and those that were unresolved at the time of that report. Grievance data should be gender-disaggregated.

Major changes to Contractors environmental and social practices.

Deficiency and performance management: actions taken in response to previous notices of deficiency or observations regarding ESHS performance and/or plans for actions to be taken should continue to be reported to UNOPS until it determines the issue is resolved satisfactorily. Contractors shall meet the following Environmental, Health, Safety and Social (including labor) requirements – thereafter called ESHS requirements⁹.

⁹ The ESHS requirements build on the General EHS Guidelines of the World Bank Group, but also take into account other World Bank guidelines, and good practice notes

Annex 2 GM Complaint and Suggestion Form

YEMEN EMERGENCY LIFELINE استمارة توثيق ومتابعة شكاوى المستفيدين
 CONNECTIVITY PROJECT
 YELCP
 Sample of GM
 Complaint and Suggestion Form

برنامج تنمية الطرق الريفية
 نموذج لآلية التظلمات والشكاوى

"Documenting and Monitoring Complaints Form of Beneficiaries of Yemen Emergency Life Line Connectivity Project YELCP

			الاسم الثلاثي للمستفيد: Beneficiary Name
رقم الهاتف للمتابعة Tel Number for follow up		رقم البطاقة الشخصية: .ID No	
			العنوان الدائم: Permanent Address
			اسم النشاط المنفذ (مركز/وحدة) Name of Activity under implementation
المحافظة: Governorate	المديرية: District	القرية: Village	مكان تنفيذ النشاط: Place of activity under implementation

أخرى Other	مالية Financial	فنية Technical	إدارية Administrative	نوع الشكوى Complaint Type

موضوع الشكوى:

Complaint Subject

		الوضع الحالي: Current Situation
		أسباب المشكلة: Reason of the problem
توقيع صاحب الشكوى: Complainant Signature	التاريخ: Date	

- الجهة التي يجب أن يقدم لها الشكوى: UNOPS – Tool Free No 8000190 Tel: 01 504914/915 - SMS: 739888388 Email:.....GM.yemen@unops.org

:The entity, which the complaint should be forwarded to

- الرأي في جدية الشكوى:.....

Opinion on the seriousness of the complaint

- الجهة المحول لها الشكوى:.....

The complaint transferred to

- المدة الزمنية اللازمة للبت في الشكوى:.....

Time required for response

- مدى رضا المستفيد عن الاستجابة لحل شكاواه:.....

Satisfaction of beneficiary in responding to his/her complaint

		الإجراءات المتخذة: Action taken
التاريخ: Date	ما ترتب عليها من نتائج: The results of the action taken	

اسم مستلم الشكوى ووظيفته:.....

Name of person received the complaint and his/her position

توقيع الموظف المختص/ Signature

: Date / التاريخ

.....

Annex 3: Samples of Public Consultation Questionnaires

برنامج تنمية الطرق الريفية.

إن الهدف الرئيسي لبرنامج تنمية الطرق الريفية على المدى البعيد هو تحسين حياة ومعيشة سكان المناطق النائية بما في ذلك سكان الأرياف وتقليل العزلة التي يعيشونها وكذلك تواصل المجتمع الريفي بسكان المناطق الأخرى وتسهيل الدخول إلى الأسواق والحصول على الخدمات العامة من مياه - تعليم - صحة - كهرباء - وتحسين الطرق وربط تلك المناطق بالمراكز الإدارية لمراكز المديرية والمحافظات . وعلى ضوء ما تقدم تم إختيار مسار مشروع طريق المعرص - البجيلة ضمن المشاريع المستهدفة تنفيذها (إنشاء الطريق / (صيانة الطريق) والذي يتوقع أن يساهم في تحسين حياة ومعيشة المواطنين. وعليه يرجى إكمال الاستبيان أدناه لما فيه المصلحة العامة :

اسم المشروع.....	رمز المشروع.....	مديرية:.....
محافظه:.....		
اسم منفذ الاستبيان :	التاريخ:/...../.....	
اسم مشارك الاستبيان :	النوع: <input type="checkbox"/> ذكر <input type="checkbox"/> أنثى	
(العمر:(اقل من 15) (16-30) (31-45) (46-أكثر	رقم الهاتف	
المهنة:		

م	الآثار الإيجابية لمشروع الطريق : ما مدى موافقتك على ما يلي:	موافق	غير موافق	لا أعرف
1	صيانة الطرق سيخفف من الازدحام المروري			
2	تأهيل الطريق سوف يساعد في الحفاظ على المركبات			
3	تنفيذ المشروع سوف يساعد في تحسين السلامة المرورية للمركبات والأشخاص وخاصة المعوقين والأطفال			
4	تنفيذ المشروع سيساهم في تحسين الخدمات : ماء - كهرباء - غاز-تعليم -صحة -تقليل زمن المواصلات - تسويق المحاصيل الزراعية			
5	المشروع سوف يساهم في تشجيع تشغيل عمالة من السكان المحليين وتحسين دخلهم.			
6	المشروع سوف يساهم في الحد من الحوادث داخل القرى التي يمر بها الطريق.			
7	المشروع سيساهم في تقليص زمن الوصول إلى الخدمات كالمدراس والمستشفيات.			
8	سيساهم المشروع في مساعدة الأسرة بالتنقل بسهولة وزيارة الأقارب .			
9	سيساهم المشروع في التخفيف من معاناة النازحين والفقراء والسكان بشكل عام			
10	تنفيذ المشروع سيساهم في تحسين الأنشطة الاقتصادية			
11	أي آثار إيجابية أخرى تتوقعها			

م	المخاوف من المشروع الطريق : هل لديك تخوف مما يلي	نعم	لا	لا أعرف
1	بعد تنفيذ المشروع سترداد سرعة المركبات على الطريق وتكثر الحوادث			
2	انقطاع الطرق سيؤدي إلى صعوبة الوصول إلى مرافق الخدمات مثل المستشفيات والمدارس والأسواق العامة أثناء فترة العمل بمشروع الطريق			
3	الخسارة الاقتصادية للمحلات التجارية في فترة التنفيذ وإغلاق الطريق			
4	عدم الاستجابة لشكاوى الأهالي في حين حدوث وجود مخالفات في فترة التنفيذ من قبل المقاول			
5	عدم مراقبة المقاول أثناء تنفيذ عن العمل من قبل أصحاب العمل			

			6	الازعاج اثناء التنفيذ
			7	الغبار الناتج عن الأعمال
			8	الاستحواذ واستخدام ارضى خاصة
			9	توجيه حركة المرور لطرق عبر تحويل أخرى قد يسبب ازدحام مروري اختناقات مرورية في شوارع اخرى
			10	انقطاع وتعطيل خدمات المياه والمواصلات في موقع المشروع
			11	سيتسبب المشروع بعنف مجتمعي (ضد النساء- الأطفال – المهمشين- النازحين..)
			12	أي تخوفات أخرى
			13	أي احتياجات أخرى:.....

هل يمثل المشروع أولوية لتنفيذ أعمال (الإنشاء / الصيانة) ولماذا؟

.....

.....

.....

.....

.....

Annex 4 Consultation Records Samples

قائمة الأشخاص المستهدفين من المشاورات (المشاورات الرجالية والنسائية)

12-1

بسم الله الرحمن الرحيم

برنامج تنمية الطرق الريفية.

الإدارة العامة - صنعاء

إن الهدف الرئيسي لبرنامج تنمية الطرق الريفية على المدى البعيد هو تحسين حياة ومعيشة سكان المناطق النائية بما في ذلك سكان الأرياف وتقليل العزلة التي يعيشونها وكذلك توصل المجتمع الريفي بسكان المناطق الأخرى وتسهيل الدخول إلى الأسواق والحصول على الخدمات العامة من مياه - تعليم - صحة - كهرباء - وتحسين الطرق وربط تلك المناطق بالمراكز الإدارية لمراكز المديرية والمحافظات . وعلى ضوء متقدم تم اختيار مسار مشروع طريق/ باجل - الجنيدية - الصليف، ضمن المشاريع المستهدفة تنفيذها (إنشاء الطريق/ صيانة الطريق) والذي يتوقع أن يساهم في تحسين حياة ومعيشة المواطنين.

وعليه يرجى إكمال الاستبيان أدناه لما فيه المصلحة العامة :

اسم المشروع: طريق باجل- الجنيدية - الصليف (رمز المشروع: ELC-RAP-HOD-001) - مديرية: باجل - محافظة: الحديدة	اسم منفذ الاستبيان: د/ عبد العزيز محمد
التاريخ: 2019/09/09	اسم مشارك الاستبيان: حسن سليمان علي
النوع: <input type="checkbox"/> ذكر <input type="checkbox"/> انثى	العمر: 15... (أقل من 15) (16-30) (31-45) (أكثر)
رقم الهاتف:	المهنة: معلم

م	الأثار الإيجابية لمشروع الطريق : ما مدى موافقتك على ما يلي:	موافق	غير موافق	لا أعرف
1	تأهيل وصيانة الطرق ستخفف من الازدحام المروري	موافق		
2	تأهيل وصيانة الطريق سوف يساعد في الحفاظ على المركبات	موافق		
3	تنفيذ المشروع سوف يساعد في تحسين السلامة المرورية للمركبات والأشخاص وخاصة المعوقين والأطفال	موافق		
4	تنفيذ المشروع سيساهم في تحسين الخدمات : ماء - كهرباء - غاز - تعليم - صحة - تقليل زمن المواصلات - تسويق المحاصيل الزراعيه	موافق		
5	المشروع سوف يساهم في تشجيع تشغيل عمالة من السكان المحليين وتحسين دخلهم.	موافق		
6	المشروع سوف يساهم في الحد من الحوادث داخل القرى التي يمر بها الطريق.	موافق		
7	المشروع سيساهم في تقليص زمن الوصول الى الخدمات كالمدراس والمستشفيات.	موافق		
8	سيساهم المشروع في مساعدة الاسره بالتنقل بسهولة وزيارة الأقارب .	موافق		
9	سيساهم المشروع في التخفيف من معاناة النازحين والفقراء والسكان بشكل عام	موافق		
10	تنفيذ المشروع سيساهم في تحسين الأنشطة الاقتصادية	موافق		
11	أي اثار إيجابية أخرى تتوقعها.....	موافق		

م	المخاوف من المشروع الطريق : هل لديك تحوف مما يلي	نعم	لا	لا أعرف
1	بعد تنفيذ المشروع ستزداد سرعة المركبات على الطريق وتكثر الحوادث		لا	
2	انقطاع الطرق سيؤدي إلى صعوبة الوصول إلى مرافق الخدمات مثل المستشفيات والمدارس و الأسواق العامة أثناء فترة العمل بمشروع الطريق		لا	
3	الخسارة الاقتصادية للمحلات التجارية في فترة التنفيذ وإغلاق الطريق		لا	
4	عدم الاستجابة لشكاوى الاهالي في حين حدوث وجود مخالفات في فترة التنفيذ من قبل المقاول		لا	
5	عدم مراقبة المقاول أثناء تنفيذ العمل من قبل اصحاب العمل		لا	
6	الازعاج اثناء التنفيذ		لا	
7	الغبار الناتج عن تنفيذ الاعمال		لا	
8	الاستحواذ واستخدام ارضي خاصة		لا	
9	توجيه حركة المرور لطرق عبر تحويل أخرى قد يسبب ازدحام مروري اختناقات مرورية في شوارع أخرى		لا	
10	انقطاع وتعطيل خدمات المياه والمواصلات في موقع المشروع		لا	
11	سيتسبب المشروع بعنف مجتمعي (ضد النساء- الأطفال - المهمشين- النازحين..)		لا	
12	أي تخوفات أخرى		لا	
13	أي احتياجات أخرى:.....		لا	

Annex 5 Subproject Photos





Annex 6 Due diligence report

Assessment was conducted to evaluate whether any assets will be affected by the subproject civil work in which all assets found outside the corridor of impact without any potential impact that could be resulted. The entire civil work will be implemented within the existing right of way, public land where there is no cultivation nor fruit trees. The following assets were identified along the road and all assets were out of the corridor of impact; distance from the end of the corridor of impact is added in the below table.

No	Category of asset	Description	Latitude	Longitude	Distance from end of Corridor of impact (meter)
1	Fence	University fence	15.051842	43.276227	12.50
2	Structure	Residential house	15.052126	43.275593	4.5

Annex 7 Relocation activities summary

This annex has been added to clarify the activities stated under the scope of work which includes any relocation activities. All assets that will be relocated are public assets and will be relocated into public lands.

- **Relocation of existing public water pipes**

This item is related to the transferring of the existing public water pipes so such pipes will not be affected by the movement of equipment or civil work activities. Water pipes will be secured and relocated adjacent to the road side in a safe public land. Existing location of the pipes and its dimensions are available in the below table:

Distance from the start point of the subproject (KM+M)		Length (Meter)	Location
From	To		
1+410 ¹⁰	1+470	60	Adjacent to the road edge (within 1 meter)

¹⁰ (1+410 equals 1 Km+410 meters) which is representing the point within the road track which is in 1,410 meters distance from the subproject start point, point 0

4+275	4+300	25	Adjacent to the road edge (within 1 meter)
8+805	8+820	15	Adjacent to the road edge (within 1 meter)

- **Relocation of existing public walls**

This item is about the reinstallation/rebuilding of existing public walls if affected by the civil work or equipment/vehicles movement. Those walls are public and will be rebuilt as required immediately after completing the civil work at the relevant road section in public lands. The walls existing location and its dimensions are available in the below table:

Distance from the start point of the subproject (KM+M)		Length (Meter)	Description	Current location
From	To			
4+040	4+070	30	Re building at same location if affected by civil works activities	60 cm from the corridor end
8+850	8+905	55	Re building at same location if affected by civil works activities	0.8 – 2.0 M from the corridor end
15+175	15+225	50	If affected by civil works, to be shifted 0.5 m within the corridor limit.	2.65 m from the corridor end

- **Relocation of existing public electrical poles**

This item is about the transferring of the existing public electrical poles so such infrastructure will not be affected by the equipment movement or civil work activities. Poles will be secured and relocated by the official authorities in safe public lands away from the equipment movement. Location of such infrastructure and its dimensions are available in the below table:

Distance from the start point of the subproject (KM+M)	Current location
0+055	Adjacent to end of the ditch (within 2 meter from end of the corridor)
0+350	Adjacent to end of the ditch (within 2 meter from end of the corridor)
0+420	Adjacent to end of the ditch (within 2 meter from end of the corridor)
0+495	Adjacent to end of the ditch (within 2 meter from end of the corridor)
0+536	Adjacent to end of the ditch (within 2 meter from end of the corridor)
0+643	Adjacent to end of the ditch (within 2 meter from end of the corridor)
1+155	Adjacent to end of the ditch (within 2 meter from end of the corridor)
1+380	Adjacent to end of the ditch (within 2 meter from end of the corridor)
1+415	Adjacent to end of the ditch (within 2 meter from end of the corridor)

- **Relocation of existing public telephone poles**

This item is about the transferring of the existing poles so such infrastructure will not be affected by the equipment movement or civil work activities. Poles will be secured and relocated by the official authorities in safe public lands away from the equipment movement. Location of such infrastructure and its dimensions are available in the below table:

Distance from the start point of the subproject (KM+M)	Current location
0+050	Adjacent to end of the ditch (within 2 meter from corridor end)
0+438	Adjacent to end of the ditch (within 2 meter from corridor end)

- **Relocation of existing of public fences**

This item is about the reinstallation of existing public fences if affected by the civil work or equipment/vehicles movement. Those fences are public and will be reinstalled in public lands as required immediately after completing the civil work at the relevant road section. The fences existing location and its dimensions are available in the below table:

Distance from the start point of the subproject (KM+M)		Length (Meter)	Location
From	To		
01+375	01+410	35	Adjacent to the road edge (within 2 meter)
19+770	19+835	65	Adjacent to the road edge (within 1 meter)